

# FIRE AND EVACUATION PLAN

For



## Moorooka Industrial Village 25 Michlin Street Moorooka, Qld 4105

Date Created – August 2011

Prepared by: -



**JAMES C HATCH & ASSOCIATES**  
**FIRE EVACUATION PROCEDURES**

Telephone: (07) 3219-4340 Email: MAIL@JAMESCHATCH.COM.AU  
(ABN 20 761 434 059 – FSA Licence 008188)

## Document Control Sheet

### Contact for Enquiries and Proposed Changes

If you have any questions regarding this document, or a suggestion for improving this document please contact:

Name	Property Manager
Business	De Martini Fletcher Property
Address	L10, 46 Edward Street Brisbane, QLD 4000
Phone	(07) 3211 2033/ 0410 258 547
Email	property@demartini.com.au
Property Owner	John Francesco De Martini & Lientage Investments Pty Ltd
Address	c/- De Martini Fletcher L10, 46 Edward Street Brisbane, QLD 4000
Phone	0484 003 475
Fire Safety Advisor	James C Hatch
Phone	(07) 3219 4340
Mobile	0411 188 466
Email	Jim@jameschatch.com.au
Date of Qualifications	February 2021
RTO issued qualifications	Chubb Training
Person Responsible for Evacuation Co-ordinator	Sally Collins
Phone	0401 258 547
Fire Evacuation and First Response Instructor	Mark Jones (FSA)
Phone	0412 450 741
Email	mark@jameschatch.com.au
Date of Instructions	Refer Record of Training (Attached Sheets)

## Fire & Evacuation Plan annual review

Reviewed By	Date of Review	Changes made?
James Hatch	January 2012	First Issue
Charles Strubin	June 2013	Annual Review
Charles Strubin	October 2014,15,16	Annual Review
Charles Strubin	November 2017	Annual Review
Charles Strubin	November 2018	Annual Review – Update Building Info
Charles Strubin	November 2019	Annual Review – Update Building Info
James Hatch	November 2020	Annual Review – Update Building Info
Mark Jones	November 2021	Annual Review – Update Building Info
Mark Jones	November 2022	Annual Review – No changes required

## Disclaimer

Whilst all care has been taken by the Author to ensure that the information contained in this Fire & Life Safety Management & Use Emergency Fire Plan is suitable for the site specified, we make no statements, representations or warranties about the accuracy, completeness or performance of the information. We disclaim all responsibility and liability (including negligence) for all expenses, losses, damages and costs you might incur as a result of the information being inaccurate in any respect or arising out of the performance of this Fire & Life Safety Management & Use Emergency Fire Plan.

The Author holds no responsibility for updating or the keeping of copies of this Fire and Evacuation Plan once the final document has been accepted by the client. It is the responsibility of the purchaser of this Fire and Evacuation Plan to keep it up to date and to make any changes as they may occur.

## Copyright

The intellectual property rights in this Fire & Life Safety Management & Use Emergency Fire Plan are owned by the Author. You may reproduce all or part of this manual for your own internal use in establishing and maintaining emergency procedures for the site specified in this Fire & Life Safety Management & Use Emergency Fire Plan. You may not use the Fire & Life Safety Management & Use Emergency Fire Plan (or any reproductions of it) for establishing or maintaining emergency procedures at other sites or for commercial purpose.

## Policy Relating to Emergency Planning

For compliance with the Fire & Rescue Act of Qld and the Building Fire Safety Regulations of Queensland 2008 a Fire Evacuation Plan must be established and maintained with annual reviews.

It is the policy that in individual buildings and building complexes, there shall be appropriate plans to control all types of emergency situations that can affect residents' safety, corporate assets, or the continuity of services.

These plans are required to include the orderly evacuation of personnel from the building where emergency conditions necessitate such action.

This Building will comply with all current requirements of legislation and standards of the Queensland Fire and Rescue Service, the Building Fire Safety Regulation 2008, Australian Standard for Emergency Control Organization and Procedures for Buildings (AS 3745) if this plan and the advice given therein is implemented and followed.

Failure to comply with the regulations incurs penalty points, which may result in a fine by Queensland Fire and Emergency Service.

Management is responsible for the maintenance of all special services and the occupational health and safety in all common areas under their supervision. They are also responsible for the care and upkeep of equipment and the support for training of staff.

The effectiveness of action during emergencies relies not only on the organisation and facilities contained in emergency plans, but also the correct operation of the Life Safety and in the co-operation of all Residents.

This Fire & Life Safety Management & Use Emergency Plan specifies the relevant organisation and actions to enable the effective control of an emergency within the confines of Moorooka Industrial Village, 25 Michlin Street, Moorooka, Qld 4105

## Implementation Checklist

The successful implementation of these emergency procedures relies on confirmation that the following actions have been taken and completed by the Management: -

- Fire Plan and Instructional poster prepared and installed.
- All Tenants should ensure that their personnel evacuation plan is in place (Each Tenancy is responsible for their occupant)

The effectiveness of action during emergencies relies not only on the organisation and facilities contained in emergency plans, but also in the co-operation of Residents.

- Emergency procedures instructional literature for staff circulated and copies available for new staff or visitors. Induction training program to ensure new employees are aware of the emergency arrangements introduced.
- General Evacuation, Evacuation Coordination and First Response training organised (Annual training arranged by the Property Manager).
- Trial Evacuation exercise conducted annually. (arranged by the Management)
- Regular tests of fire equipment conducted and recorded. (Test to be carried out in accordance with the relevant Australian Standards i.e. AS 1851)
- Regular Fire Safety Checks carried out.
- Annual testing of all equipment associated with the Fire Services
- Regular tests of Emergency & Exit lighting conducted and recorded. (Test to be carried out in accordance with the relevant Australian Standards i.e. AS 2293)
- Maintaining current and correct Records of services. (kept in fire resistant cabinet)
- Prepare and issue an Annual Occupier's Statement to QFRS

## Evacuation Coordination Procedures

<b>Commencement Date:</b>	01/08/2011
<b>Procedure</b>	If fire discovered or hearing a Ringing Bell, evacuate persons from the immediate danger and ensure no one enters building
<b>Procedure for contacting fire service</b>	Dial '000' or mobile '112'
<b>Persons with special needs</b>	Check Register and ensure everyone is out of the building
<b>Checking that all persons have been evacuated</b>	Evacuation Coordinator or the prescribed person on site is the last to leave after checking that no person is in the building

## Emergency Evacuation Procedure

### **EMERGENCY ALARM PROCEDURES**

Installed in each building is an Automatic Sprinkler System connected to Emergency Services.

♫ **FIRE WARNING CAN ONLY BE ACHIEVED BY 'Verbal Expression' ASSISTED BY 'RINGING BELL' AT THE SPRINKLER VALVE**

**ALL STAFF AND VISITORS SHOULD BE MADE AWARE OF THIS SITUATION**

**When a fire warning is given you are required to commence evacuation**

- All Visitors and Staff not involved in Fire Warden Duties are to comply with the directions of the Fire Wardens when evacuating the building to the Assembly Area (Refer Evacuation Plan)
- Fire Wardens to check Emergency Services have been called
- Fire Wardens to check all rooms accounting for all occupants at the time of the alarm (If Safe)
- Secure equipment and valuables (Only if Safe)
- When control is established AND IT IS SAFE, fight the fire using the appropriate fire extinguisher

**ALWAYS TAKE INSTRUCTIONS FROM THE ATTENDING EMERGENCY SERVICES PERSONNEL**

**DO NOT RE-ENTER THE BUILDING UNTIL IT IS DECLARED SAFE TO DO SO**

**To call Emergency Services - Dial '000' (triple zero)**

## Fire Extinguisher Procedure in Use

- Do not panic - remain calm.
- Announce a fire warning to everybody in the area.
- Request someone contact the Fire Brigade and the Fire Warden and have it confirmed.
- Position yourself away from the fire – **3 to 4 Paces** depending on the extinguisher type.
- Always maintain a **CLEAR** exit (fire in front and doorway behind).
- Check extinguisher label for operation.
- Commence fighting fire aiming the spray at the base of the fire with a side-to-side motion.
- Move closer as fire diminishes. (**Remain 1 pace away**)

NB. Have another extinguisher available only if a failure should occur.

**BE CERTAIN YOU KNOW HOW AND ON WHAT FIRES  
TO USE THE EXTINGUISHERS  
REFER TO EXTINGUISHER IDENTIFICATION DISC**

## P.A.S.S.



**P** – Pull out the safety pin



**A** – Aim at the base of the fire



**S** – Squeeze the handle



**S** – Sweep across the fire

### **DO NOT FIGHT THE FIRE IF THE FOLLOWING CONDITIONS EXIST**

- *You have not been trained or instructed in using a fire extinguisher*
- *You don't know what's burning*
- *The fire is spreading rapidly*
- *You don't have the proper equipment*
- *You can't do so with your back to an exit*
- *The fire might block your means of escape*
- *You might inhale toxic smoke*
- *Your instincts tell you not to do so*
- *If the first attempts to put out the fire do not succeed, evacuate the building immediately*

**If the first attempts to put out the fire do not succeed, evacuate the building immediately**

## **FIRE HYDRANTS**

Fire hydrants are installed but are for the use by Emergency Services Only

## Fire Extinguisher Selection Chart

Type of extinguisher		Type of Fire, Class and Suitability						Comments (Refer Appendix B)	
Colour scheme AS/NZS1841 -1997	AS1841 -1992	Extinguishant	A Wood, paper, plastics,etc	B Flammable liquids	C Flammable gases	E Energized electrical equipment	F Cooking oils and fats		D** Metal fires
		Water							Dangerous if used on flammable liquid, energized electrical equipment and cooking oil/fat fires
		Wet Chemical							Dangerous if used on energized electrical equipment
		Foam***							Dangerous if used on energized electrical equipment.
		Powder	ABE						Special powders are available specifically for various types of metal fires (see **).
			BE						
		Carbon Dioxide							Generally not suitable for outdoor use. Suitable only for small fires.
		Vaporizing Liquid							Check the characteristics of the specific extinguishant.
		Fire Blanket							

\* Limited indicates that the extinguishant is not the agent of choice for the class of fire, but that it will have a limited extinguishing capability.

\*\* Class D fires (involving combustible metals). Use only special purpose extinguishers and seek expert advice.

\*\*\* Solvents which may mix with water, e.g. alcohol and acetone, are known as polar solvents and require special foam. These solvents break down conventional AFFF.

Australian Standard 2444-2001

### HOSE REELS



Hose reels should be used by Fire Service Personnel or trained firefighting party members only. However, it is important all persons are aware of their locations and the limitation of their use.

THE POSITION OF FIRE HOSE REELS SHOWN ON THE FIRE PLANS

### Fire Hose Reel Operation

- Turn on the tap located directly below the main hose drum
- Draw out the hose to approximately 4 paces from the fire
- Twist the nozzle or operated the lever
- Aim the water stream at the base of the fire
- As fire diminishes change the stream to a spray to cool down the embers



**DO NOT USE A FIRE HOSE REELS ON OR NEAR LIVE ELECTRICAL POWER**



**Certificate of Classification Building Approval Documents**

**Local authorities have no Building Approvals on file.  
The building was built over 60 years ago.**

**Fire Safety Installation Checklist**

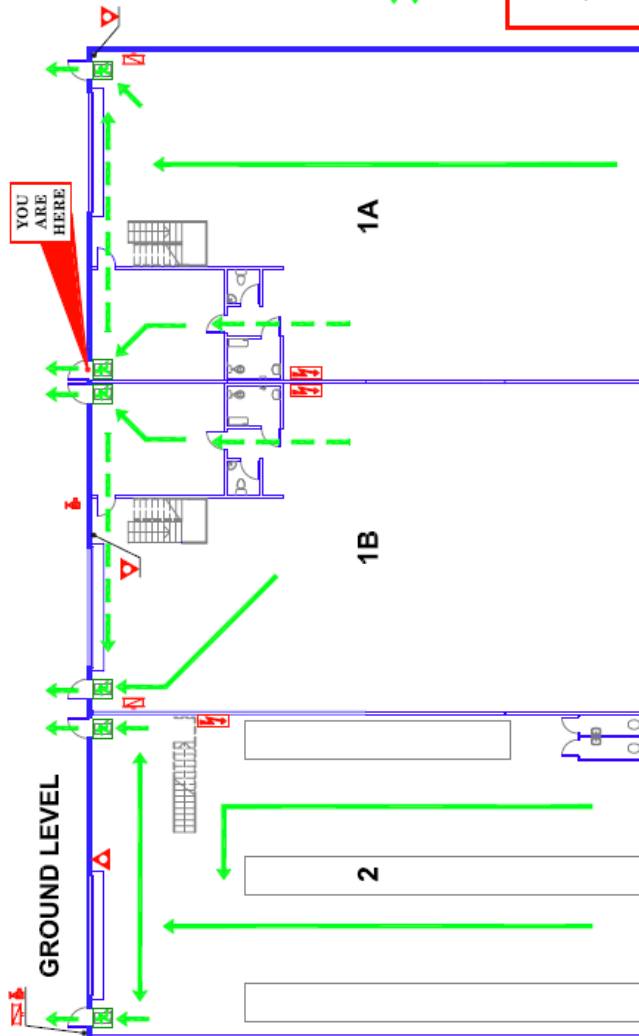
Fire Safety Installation	Installed?	
	YES	NO
Emergency Lifts		✓
Emergency Lighting	✓	
Exit Signage	✓	
Smoke Alarms		✓
Smoke Detection and Alarm System		✓
Fire Doors		✓
Fire Extinguishers	✓	
Fire Blankets		✓
Fire Hose Reels	✓	
Fire Sprinklers (Main Shed Only)	✓	
Fire Hydrants	✓	
Protection of penetrations through fire rated construction		✓
Smoke Exhaust System		✓

Other features – Includes additional fire safety installations or conditions that are required under the buildings Alternative solution of the *Building Act 1975* or *Building Code of Australia* clauses E1.10 and E2.3

# Fire Evacuation Diagrams

## FIRE EVACUATION DIAGRAM

Moorooka Industrial Village  
**BUILDING A - SHED 1A**  
25 Michlin Street  
Moorooka Qld 4105



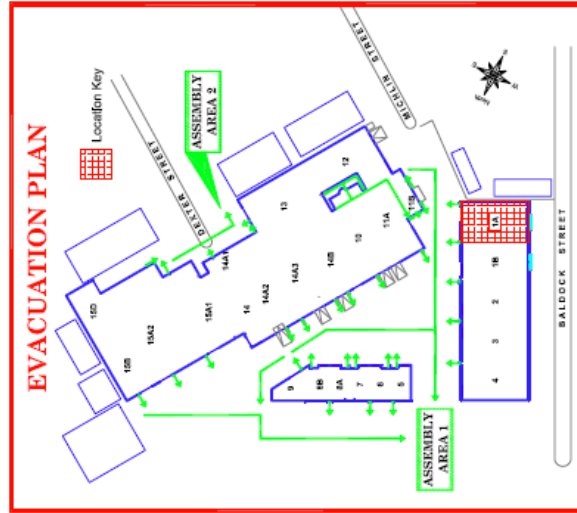
**LEGEND**

- FIRE EXTINGUISHER  
Dry Chemical Powder
- FIRE HOSE REEL
- FIRE HYDRANT
- EMERGENCY EXIT
- EXIT PATH
- ALTERNATE EXIT PATH
- ELECTRICAL SWITCHBOARD

**FIRE EXTINGUISHER OPERATION**

- S** Stand well back from fire (two to four paces)
- A** Always face the fire with your back to a clear doorway
- P** Pull pin on fire extinguisher
- A** Aim at the base of the fire
- S** Squeeze lever
- S** Sweep, operating with a slow stroke to side motion
- M** Move slowly towards the fire (within one pace away)

**DO NOT USE WATER ON OR NEAR ELECTRICAL EQUIPMENT**



**EMERGENCY ALARM PROCEDURES**

There are No Automatic or Manual fire warning systems installed in this building

**FIRE WARNING CAN ONLY BE ACHIEVED BY 'Verbal Expression'**

ALL STAFF AND VISITORS SHOULD BE MADE AWARE OF THIS SITUATION

**WHEN A FIRE WARNING IS GIVEN YOU ARE REQUIRED TO PREPARE FOR AN EVACUATION**

- ☐ All Visitors and Staff not involved in Fire Warden Duties are to comply with the directions of the Fire Wardens when evacuating the building to the Assembly Area (refer Evacuation Plan)
- ☐ Fire Wardens to check the Emergency Services have been called
- ☐ Fire Wardens to check all rooms accounting for all occupants at the time of the alarm (If Safe)
- ☐ Secure equipment and valuables (Only if Safe)
- ☐ When control is established AND IT IS SAFE, fight the fire using the appropriate fire extinguisher

**ALWAYS TAKE INSTRUCTIONS FROM THE ATTENDING EMERGENCY SERVICES PERSONNEL**

**DO NOT RE-ENTER THE BUILDING UNTIL IT IS DECLARED SAFE TO DO SO**

**To call Emergency Services - Dial '000' (triple zero)**

**DIAL '000' TO CALL EMERGENCY SERVICES**

Accessibility: Impaired Persons should evacuate IMMEDIATELY on hearing a Fire Alarm issued by a notified Person

**DeMartini Fletcher**  
Property Development & Investment

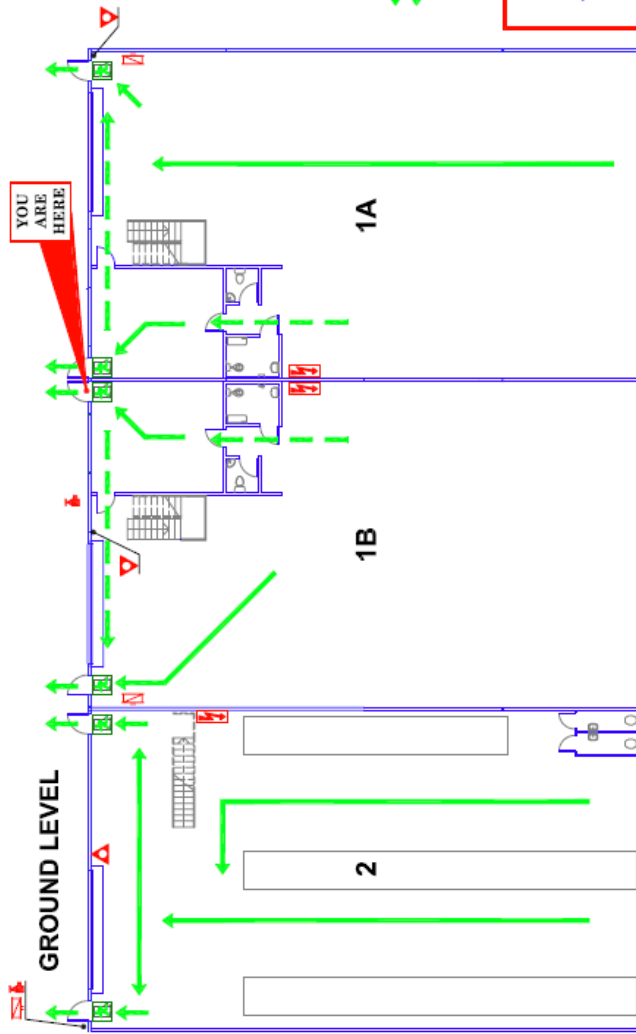
**JAMES C. HAYES & ASSOCIATES**  
PROPERTY CONSULTANTS  
100/101 Michlin Street, Moorooka QLD 4105  
Phone: 07 559 4477 Fax: 07 559 4478 Email: james@jchayes.com.au

Validation Date: March 2012

**Fire Evacuation Diagrams continued**

**FIRE EVACUATION  
DIAGRAM**

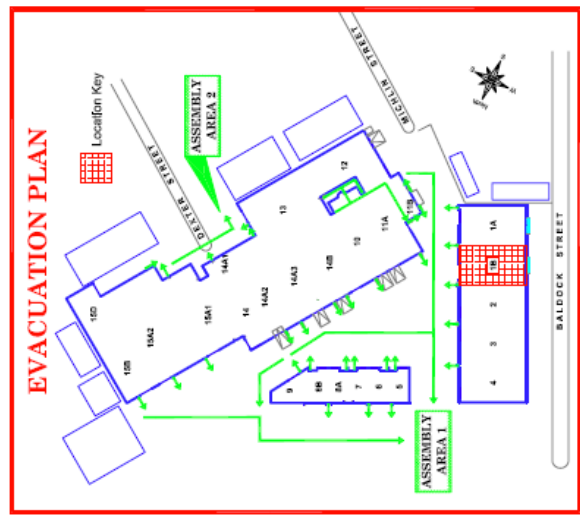
**Moorooka Industrial Village  
BUILDING A - SHED 1B  
25 Michlin Street  
Moorooka Qld 4105**



**LEGEND**

- FIRE EXTINGUISHER  
Dry Chemical Powder
- FIRE HOSE REEL
- FIRE HYDRANT
- EMERGENCY EXIT
- EXIT PATH
- ALTERNATE EXIT PATH
- ELECTRICAL SWITCHBOARD

**FIRE EXTINGUISHER OPERATION**  
Stand well back from fire (two to four paces)  
Always face the fire with your back to a clear doorway  
**P**ull pin on the extinguisher  
**A**im at base of fire  
**S**queeze lever  
**S**wEEP, operating with a slow able to side motion  
Move slowly towards the fire (remain one pace away)  
**DO NOT USE WATER ON OR NEAR ELECTRICAL EQUIPMENT**



**EMERGENCY ALARM PROCEDURES**

There are No Automatic or Manual fire warning systems installed in this building

**FIRE WARNING CAN ONLY BE ACHIEVED BY 'Verbal Expression'**

ALL STAFF AND VISITORS SHOULD BE MADE AWARE OF THIS SITUATION

**WHEN A FIRE WARNING IS GIVEN YOU ARE REQUIRED TO PREPARE FOR AN EVACUATION**

- ☞ All Visitors and Staff not involved in Fire Warden Duties are to comply with the directions of the Fire Wardens when evacuating the building to the Assembly Area (refer Evacuation Plan)
- ☞ Fire Wardens to check the Emergency Services have been called
- ☞ Fire Wardens to check all rooms accounting for all occupants at the time of the alarm (If Safe)
- ☞ Secure equipment and valuables (Only if Safe)
- ☞ When control is established AND IT IS SAFE, fight the fire using the appropriate fire extinguisher

**ALWAYS TAKE INSTRUCTIONS FROM THE ATTENDING EMERGENCY SERVICES PERSONNEL**

**DO NOT RE-ENTER THE BUILDING UNTIL IT IS DECLARED SAFE TO DO SO**

**To call Emergency Services - Dial '000' (triple zero)**

**DIAL '000' TO CALL  
EMERGENCY SERVICES**

Visually Impaired Persons should  
request the PFD (R) if attending a Fire  
Alarm Issued by a Confirmed Person

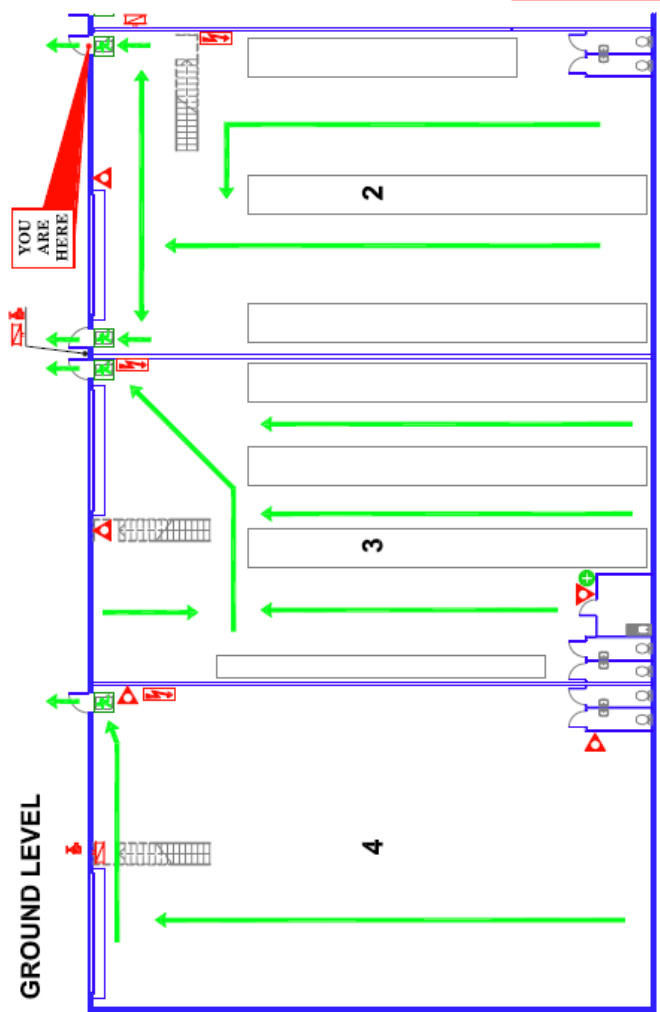
**DeMartini Fletcher**  
Property Development & Investment

**JAMES C HATCHER & ASSOCIATES**  
Fire Engineers  
10/110 Michlin Street, Moorooka QLD 4105  
Phone: 07 5511 1111 Fax: 07 5511 1112  
www.jchatcher.com.au

Validation Date: March 2012

**Fire Evacuation Diagrams continued**

**FIRE EVACUATION  
DIAGRAM**  
Moorooka Industrial Village  
BUILDING A - SHED 2  
25 Michlin Street  
Moorooka Qld 4105

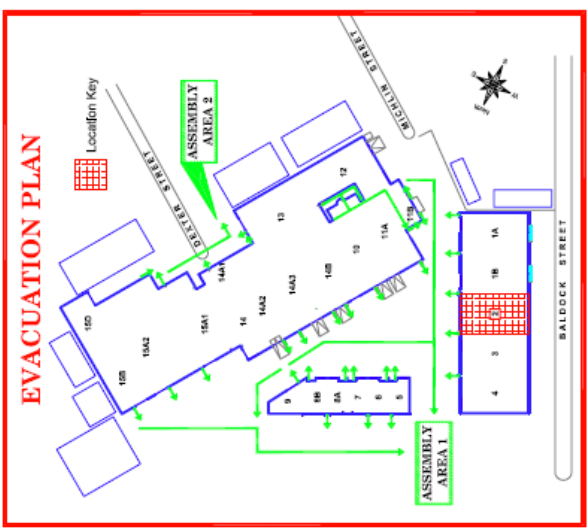


**LEGEND**

- FIRE EXTINGUISHER
- Dry Chemical Powder
- FIRE HOSE REEL
- FIRE HYDRANT
- EMERGENCY EXIT
- EXIT PATH
- ELECTRICAL SWITCHBOARD
- FIRST AID POINT

**FIRE EXTINGUISHER OPERATION**  
Stand well back from the fire (two to four paces)  
Always face the fire with your back to a clear doorway  
**P**ull pin on the extinguisher  
**A**im chestly at base of fire  
**S**queeze lever  
**S**wave, operating with a slow able to side motion  
**M**ove slowly towards the fire (remain one pace away)

**DO NOT USE WATER ON NEAR ELECTRICAL EQUIPMENT**



**EMERGENCY ALARM PROCEDURES**

There are No Automatic or Manual fire warning systems installed in this building

- ☐ FIRE WARNING CAN ONLY BE ACHIEVED BY 'Verbal Expression'

ALL STAFF AND VISITORS SHOULD BE MADE AWARE OF THIS SITUATION

WHEN A FIRE WARNING IS GIVEN YOU ARE REQUIRED TO PREPARE FOR AN EVACUATION

- ☐ All Visitors and Staff not involved in Fire Warden Duties are to comply with the directions of the Fire Wardens when evacuating the building to the Assembly Area (refer Evacuation Plan)
- ☐ Fire Wardens to check the Emergency Services have been called
- ☐ Fire Wardens to check all rooms accounting for all occupants at the time of the alarm. (If Safe)
- ☐ Secure equipment and valuables (Only if Safe)
- ☐ When controls established AND IT IS SAFE, fight the fire using the appropriate fire extinguisher

**ALWAYS TAKE INSTRUCTIONS FROM THE ATTENDING EMERGENCY SERVICES PERSONNEL**

**DO NOT REENTER THE BUILDING UNTIL IT IS DECLARED SAFE TO DO SO**

**To call Emergency Services - Dial '000' (triple zero)**

**DIAL '000' TO CALL  
EMERGENCY SERVICES**

Mobility Impaired Persons should evacuate IMMEDIATELY on hearing a Fire Alarm assigned by a nominated Person

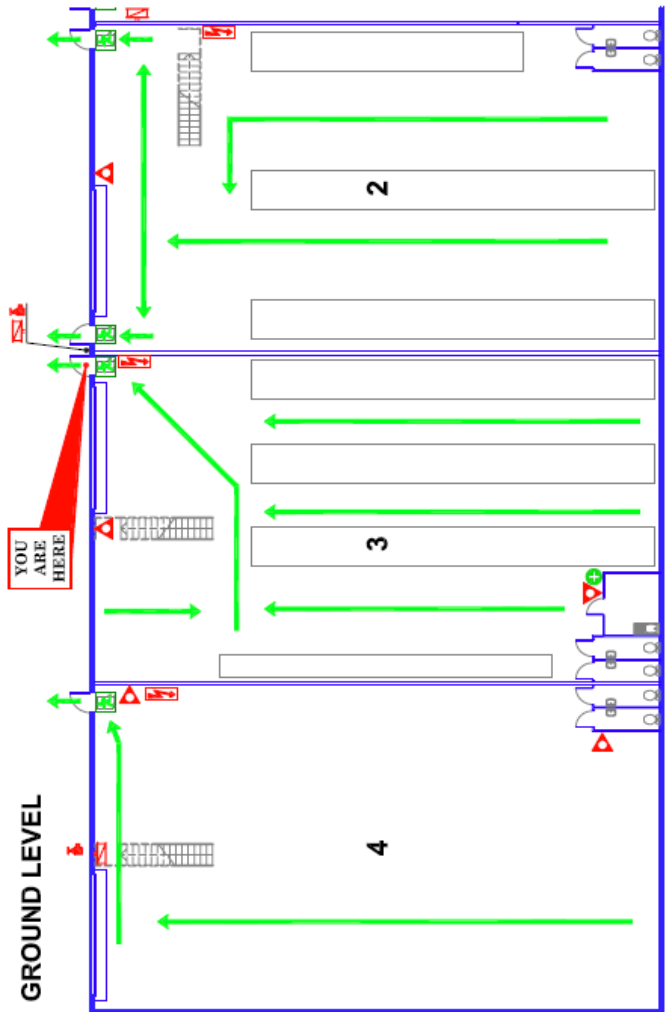
**DeMartini Fletcher**  
Property Development & Investment

**JAMES C FLETCHER ASSOCIATES**  
1/100-1/101 Michlin Street Moorooka QLD 4105  
Telephone: 07 5540 1111 Fax: 07 5540 1112  
www.jcfassociates.com.au

Validated Date: March 2012

**Fire Evacuation Diagrams continued**

**FIRE EVACUATION DIAGRAM**  
Moorooka Industrial Village  
**BUILDING A - SHED 3**  
25 Michlin Street  
Moorooka Qld 4105

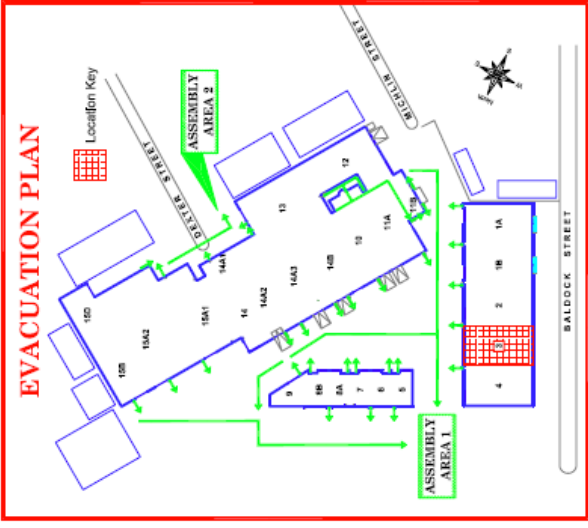


**LEGEND**

- FIRE EXTINGUISHER
- FIRE HOSE REEL
- FIRE HYDRANT
- EMERGENCY EXIT
- EXIT PATH
- ELECTRICAL SWITCHBOARD
- FIRST AID POINT

**FIRE EXTINGUISHER OPERATION**  
Some will back from fire (two to four paces)  
Always face the fire with your back to a clear doorway  
Pull pin on the extinguisher  
Aim directly at base of fire  
Squeeze lever  
Sweep, operating with a slow able to side motion  
Move slowly towards the fire (remain one pace away)

**DO NOT USE WATER ON NEAR ELECTRICAL EQUIPMENT**



**EMERGENCY ALARM PROCEDURES**

There are No Automatic or Manual fire warning systems installed in this building

**FIRE WARNING CAN ONLY BE ACHIEVED BY 'Verbal Expression'**

ALL STAFF AND VISITORS SHOULD BE MADE AWARE OF THIS SITUATION

WHEN A FIRE WARNING IS GIVEN YOU ARE REQUIRED TO PREPARE FOR AN EVACUATION

- ☞ All Visitors and Staff not involved in Fire Warden Duties are to comply with the directions of the Fire Wardens when evacuating the building to the Assembly Area (refer Evacuation Plan)
- ☞ Fire Wardens to check the Emergency Services have been called
- ☞ Fire Wardens to check all rooms accounting for all occupants at the time of the alarm (If Safe)
- ☞ Secure equipment and valuables (Only if Safe)
- ☞ When control is established AND IT IS SAFE, fight the fire using the appropriate fire extinguisher

**ALWAYS TAKE INSTRUCTIONS FROM THE ATTENDING EMERGENCY SERVICES PERSONNEL.**

**DO NOT RE-ENTER THE BUILDING UNTIL IT IS DECLARED SAFE TO DO SO**

**To call Emergency Services - Dial '000' (triple zero)**

**DIAL '000' TO CALL  
EMERGENCY SERVICES**

Mobility Impaired Persons should evacuate IMMEDIATELY on hearing a Fire Alarm assigned by a non-impaired Person

**DeMartini Fletcher**  
Property Development & Investment

**JAMES C HAYES & ASSOCIATES**  
Fire Engineers  
10/110 Stirling Street, Moorooka QLD 4105  
Phone: 07 539 4400 Fax: 07 539 4401 Email: james@jchayes.com.au  
Dial 000 for fire (000 is not a text message)

Validation Date: March 2012

**Fire Evacuation Diagrams continued**

**FIRE EVACUATION  
DIAGRAM**

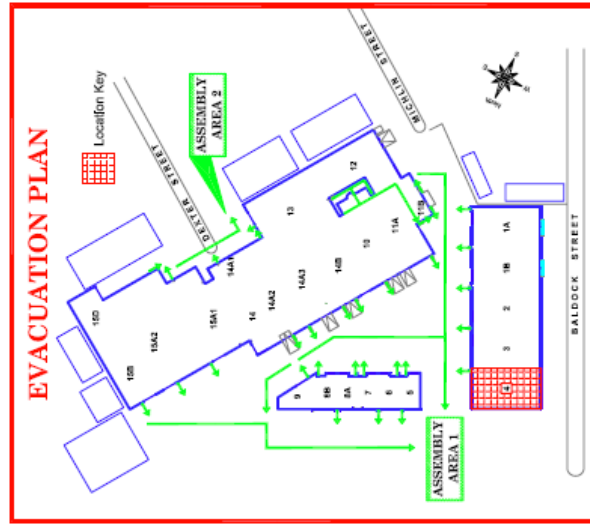
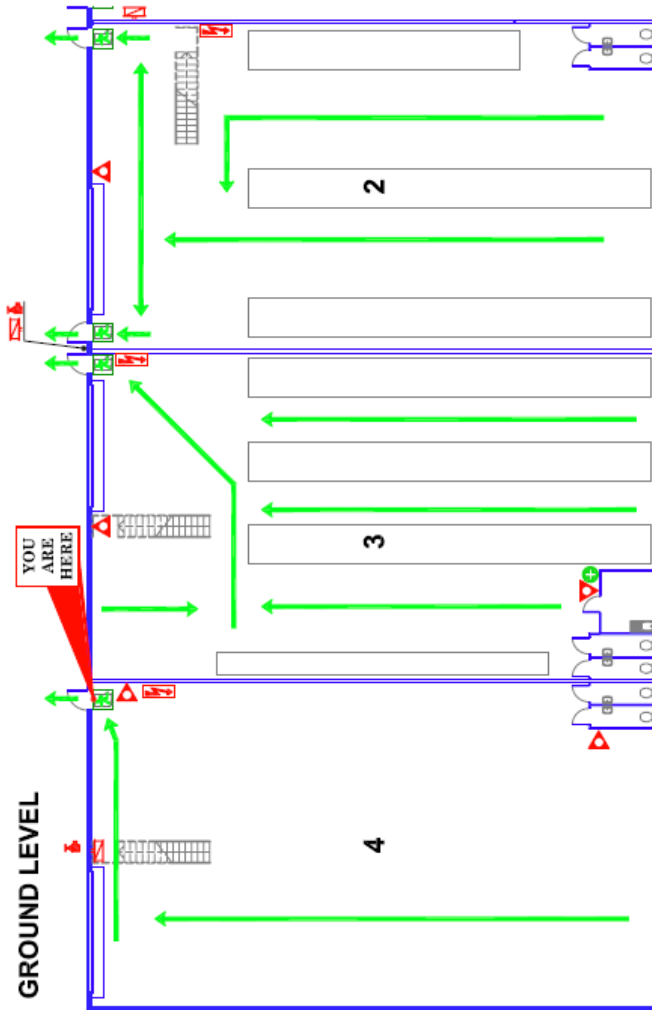
**Moorooka Industrial Village  
BUILDING A - SHED 4  
25 Michlin Street  
Moorooka Qld 4105**

**LEGEND**

- FIRE EXTINGUISHER  
Dry Chemical Powder
- FIRE HOSE REEL
- FIRE HYDRANT
- EMERGENCY EXIT
- EXIT PATH
- ELECTRICAL SWITCHBOARD
- FIRST AID POINT

**FIRE EXTINGUISHER OPERATION**  
Stand well back from fire (two to four paces)  
Always face the fire with your back to a clear doorway  
**P**ull pin on the extinguisher  
**A**im directly at base of fire  
**S**queeze lever  
**S**wave, operating with a slow able to side motion  
Move slowly towards the fire (through one pace away)

**DO NOT USE WATER ON OR NEAR ELECTRICAL EQUIPMENT**



**EMERGENCY ALARM PROCEDURES**

There are No Automatic or Manual fire warning systems installed in this building

**FIRE WARNING CAN ONLY BE ACHIEVED BY 'Verbal Expression'**

ALL STAFF AND VISITORS SHOULD BE MADE AWARE OF THIS SITUATION

**WHEN A FIRE WARNING IS GIVEN YOU ARE REQUIRED TO PREPARE FOR AN EVACUATION**

- ☞ All Visitors and Staff not involved in Fire Warden Duties are to comply with the directions of the Fire Wardens when evacuating the building to the Assembly Area (refer Evacuation Plan)
- ☞ Fire Wardens to check the Emergency Services have been called
- ☞ Fire Wardens to check all rooms accounting for all occupants at the time of the alarm (If Safe)
- ☞ Secure equipment and valuables (Only if Safe)
- ☞ When controls is established AND IT IS SAFE, fight the fire using the appropriate fire extinguisher

**ALWAYS TAKE INSTRUCTIONS FROM THE ATTENDING EMERGENCY SERVICES PERSONNEL**

**DO NOT RE-ENTER THE BUILDING UNTIL IT IS DECLARED SAFE TO DO SO**

**To call Emergency Services - Dial '000' (triple zero)**

**DIAL '000' TO CALL  
EMERGENCY SERVICES**

Maribou Involved persons should  
evacuate IMMEDIATELY on hearing a Fire  
Alarm issued by a nominated Person

**DeMartini Fletcher**  
Property Development & Investment

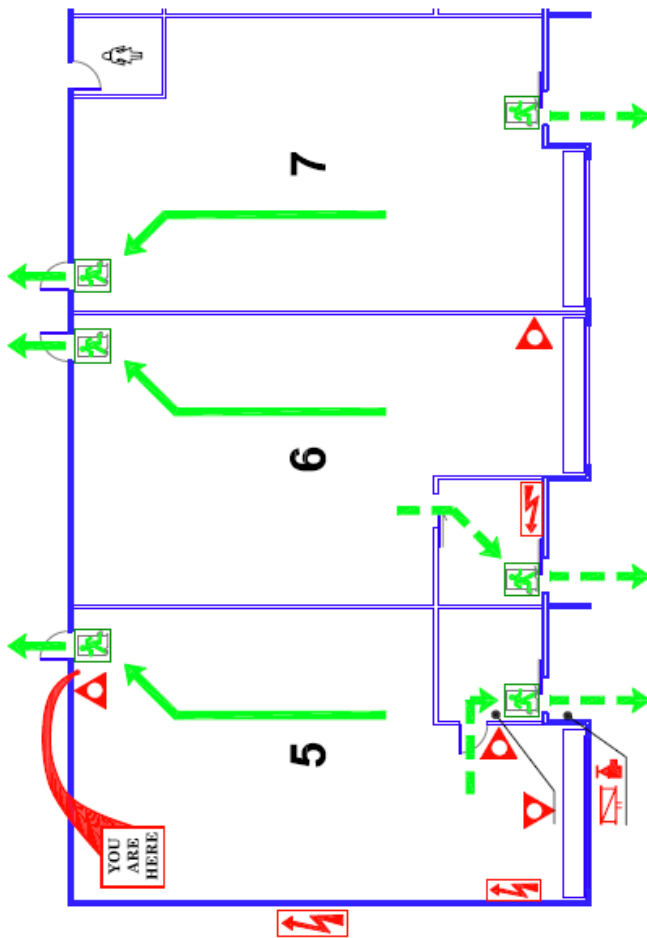
**JAMES C. HATCHER & ASSOCIATES**  
Fire Engineers  
10/11-13/15 Michlin Street, Moorooka QLD 4105  
Tel: 07 5511 1111 Fax: 07 5511 1111 Email: james@jch.com.au  
www.jch.com.au

Validation Date: March 2012

**Fire Evacuation Diagrams continued**

**FIRE EVACUATION  
DIAGRAM**

**Moorooka Industrial Village  
BUILDING B - SHED 5  
25 Michlin Street  
Moorooka Qld 4105**

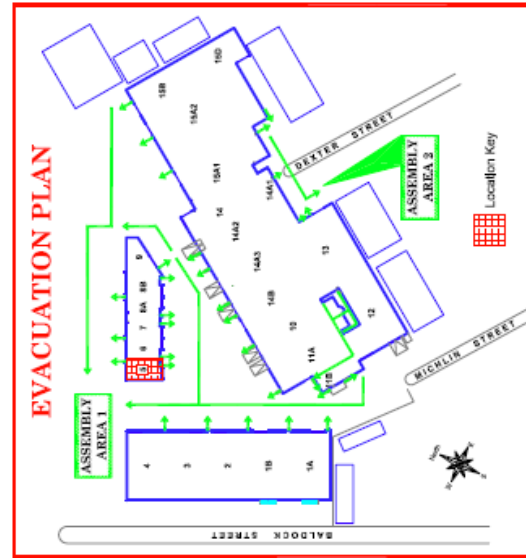


**LEGEND**

- FIRE EXTINGUISHER  
Dry Chemical Powder
- FIRE HOSE REEL
- FIRE HYDRANT
- EMERGENCY EXIT
- EXIT PATH
- ALTERNATE EXIT PATH
- ELECTRICAL SWITCHBOARD

**FIRE EXTINGUISHER OPERATION**  
Stand 1m back from fire (two to four paces).  
Always lean into the fire with your back to a clear doorway.  
**P**ull pin on fire extinguisher.  
**A**im directly at base of fire.  
**S**queeze lever.  
**S**wEEP, operating with a slow side-to-side motion.  
Move slowly towards the fire (remain one pace away).

**DO NOT USE WATER ON OR NEAR ELECTRICAL EQUIPMENT**



**EMERGENCY ALARM PROCEDURES**

There are No Automatic or Manual fire warning systems installed in this building

- FIRE WARNING CAN ONLY BE ACHIEVED BY 'Verbal Expression'

ALL STAFF AND VISITORS SHOULD BE MADE AWARE OF THIS SITUATION

**WHEN A FIRE WARNING IS GIVEN YOU ARE REQUIRED TO PREPARE FOR AN EVACUATION**

- All Visitors and Staff not involved in Fire Warden Duties are to comply with the directions of the Fire Wardens when evacuating the building to the Assembly Area (refer Evacuation Plan)
- Fire Wardens to check the Emergency Services have been called
- Fire Wardens to check all rooms accounting for all occupants at the time of the alarm. (If Safe)
- Secure equipment and valuables (Only if Safe)
- When control is established AND IT IS SAFE, fight the fire using the appropriate fire extinguisher

**ALWAYS TAKE INSTRUCTIONS FROM THE ATTENDING EMERGENCY SERVICES PERSONNEL**

**DO NOT RE-ENTER THE BUILDING UNTIL IT IS DECLARED SAFE TO DO SO**

**To call Emergency Services - Dial '000' (triple zero)**

**DIAL '000' TO CALL  
EMERGENCY SERVICES**

Visitors/Disabled Persons should evacuate IMMEDIATELY on the alarm. Alarm sounded by a non-Disabled Person



Validation Date: March 2012

**JAMES C. SANDERS & ASSOCIATES**  
REGISTERED PROFESSIONAL ARCHITECTS  
10/11-13/15 MICHLIN STREET MOOROOKA QLD 4105  
PH: 07 5521 1111 FAX: 07 5521 1112

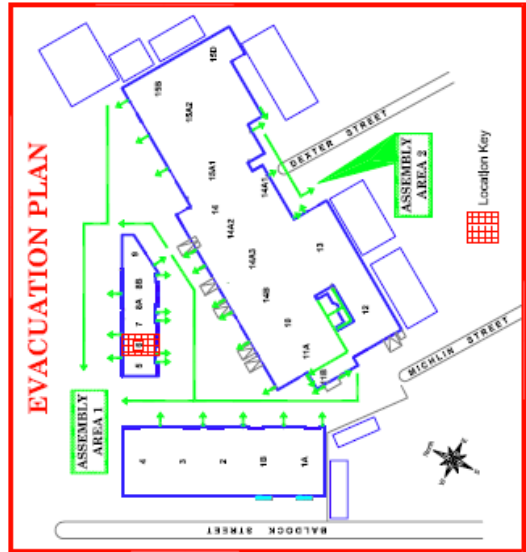
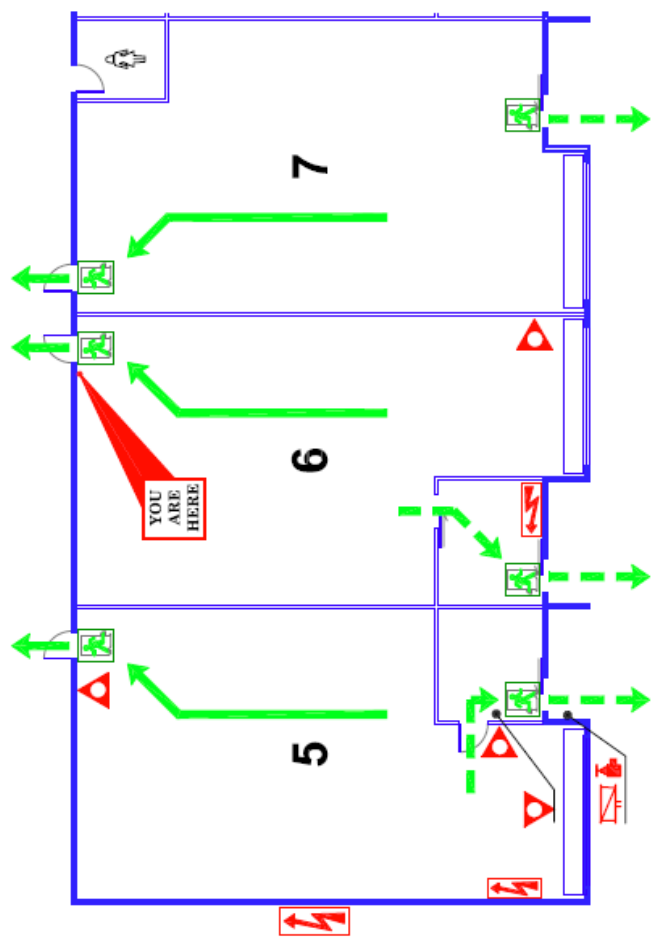
**Fire Evacuation Diagrams continued**

**FIRE EVACUATION  
DIAGRAM**  
Moorooka Industrial Village  
**BUILDING B - SHED 6**  
25 Michlin Street  
Moorooka Qld 4105

**FIRE EXTINGUISHER OPERATION**  
Stand well back from the fire (two to four paces)  
Always keep the safe with your back to a clear doorway  
**P**ull the pin on the extinguisher  
**A**im directly at base of fire  
**S**queeze lever  
**S**wing, sweeping with a slow side to side motion  
(Move slowly) towards the fire (towards one place away)

**LEGEND**  
 FIRE EXTINGUISHER  
 Dry Chemical Powder  
 FIRE HOSE REEL  
 FIRE HYDRANT  
 EMERGENCY EXIT  
 EXIT PATH  
 ALTERNATE EXIT PATH  
 ELECTRICAL SWITCHBOARD

**DO NOT USE WATER ON OR NEAR ELECTRICAL EQUIPMENT**



**EMERGENCY ALARM PROCEDURES**

There are No Automatic or Manual fire warning systems installed in this building  
 FIRE WARNING CAN ONLY BE ACHIEVED BY 'Verbal Expression'

ALL STAFF AND VISITORS SHOULD BE MADE AWARE OF THIS SITUATION

WHEN A FIRE WARNING IS GIVEN YOU ARE REQUIRED TO PREPARE FOR AN EVACUATION

- All Visitors and Staff not involved in Fire Warden Duties are to comply with the directions of the Fire Wardens when evacuating the building to the Assembly Area (refer Evacuation Plan)
- Fire Wardens to check the Emergency Services have been called
- Fire Wardens to check all rooms accounting for all occupants at the time of the alarm. (If Safe)
- Secure equipment and valuables (Only if Safe)
- When control is established AND IT IS SAFE, fight the fire using the appropriate fire extinguisher

**ALWAYS TAKE INSTRUCTIONS FROM THE ATTENDING EMERGENCY SERVICES PERSONNEL**

**DO NOT RE-ENTER THE BUILDING UNTIL IT IS DECLARED SAFE TO DO SO**

**To call Emergency Services - Dial '000' (triple zero)**

**DIAL 000 TO CALL  
EMERGENCY SERVICES**

Mobility Impaired Persons should evacuate IMMEDIATELY on hearing a Fire Alarm assisted by a non-impaired Person

**DeMartini Fletcher**  
Property Development & Investment

**JAMES C. MARTINI & ASSOCIATES**  
CONSULTANTS  
10/11-13/15 MICHLIN STREET  
MOOROOKA QLD 4105

Verbleidm. Datum: March 2012



**Fire Evacuation Diagrams continued**

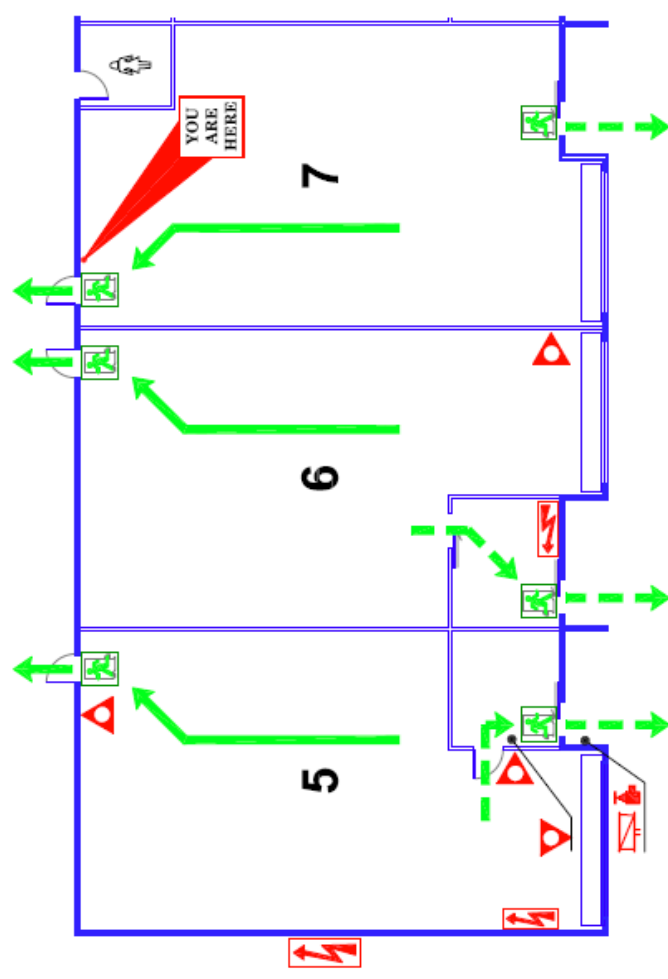
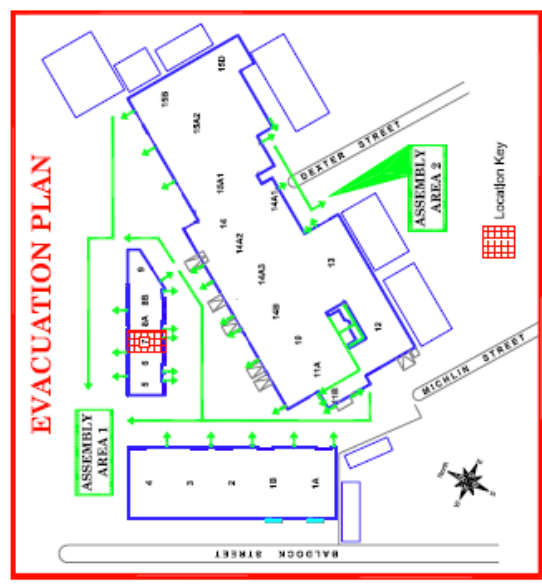
**FIRE EVACUATION  
DIAGRAM**  
Moorooka Industrial Village  
**BUILDING B - SHED 7**  
25 Michlin Street  
Moorooka Qld 4105

**LEGEND**

- FIRE EXTINGUISHER  
Dry Chemical Powder
- FIRE HOSE REEL
- FIRE HYDRANT
- EMERGENCY EXIT
- EXIT PATH
- ALTERNATE EXIT PATH
- ELECTRICAL SWITCHBOARD

**FIRE EXTINGUISHER OPERATION**  
Squeeze (pull back from the pin to your pistol)  
Aim (point the nozzle at the base of the fire)  
P (pull on the safety pin to start discharging)  
A (aim directly at base of the fire)  
S (squeeze lever)  
Sweep, operating with a slow motion to allow motion  
(move slowly towards the fire (remain one pace away))

**DO NOT USE WATER ON OR NEAR ELECTRICAL EQUIPMENT**



**EMERGENCY ALARM PROCEDURES**

There are No Automatic or Manual fire warning systems installed in this building  
FIRE WARNING CAN ONLY BE ACHIEVED BY 'Verbal Expression'  
ALL STAFF AND VISITORS SHOULD BE MADE AWARE OF THIS SITUATION

WHEN A FIRE WARNING IS GIVEN YOU ARE REQUIRED TO PREPARE FOR AN EVACUATION

- ☐ All Visitors and Staff not involved in Fire Warden Duties are to comply with the directions of the Fire Wardens when evacuating the building to the Assembly Area (refer Evacuation Plan)
- ☐ Fire Wardens to check the Emergency Services have been called
- ☐ Fire Wardens to check all rooms accounting for all occupants at the time of the alarm (If Safe)
- ☐ Secure equipment and valuables (Only if Safe)
- ☐ When control is established AND IT IS SAFE, fight the fire using the appropriate fire extinguisher

**ALWAYS TAKE INSTRUCTIONS FROM THE ATTENDING EMERGENCY SERVICES PERSONNEL**

**DO NOT RE-ENTER THE BUILDING UNTIL IT IS DECLARED SAFE TO DO SO**

**To call Emergency Services - Dial '000' (triple zero)**

**DIAL '000' TO CALL  
EMERGENCY SERVICES**

Accessibility Impaired Persons should  
evacuate IMMEDIATELY on hearing a Fire  
Alarm assisted by a nominated Person

**DeMartini Fletcher**  
Property Development & Investment

**JAMES C. MANTON & ASSOCIATES**  
FIRE EVACUATION PROCEDURES  
MOOROOKA INDUSTRIAL VILLAGE  
25 MICHLIN STREET - MOOROOKA QLD 4105

Validated Date: March 2012

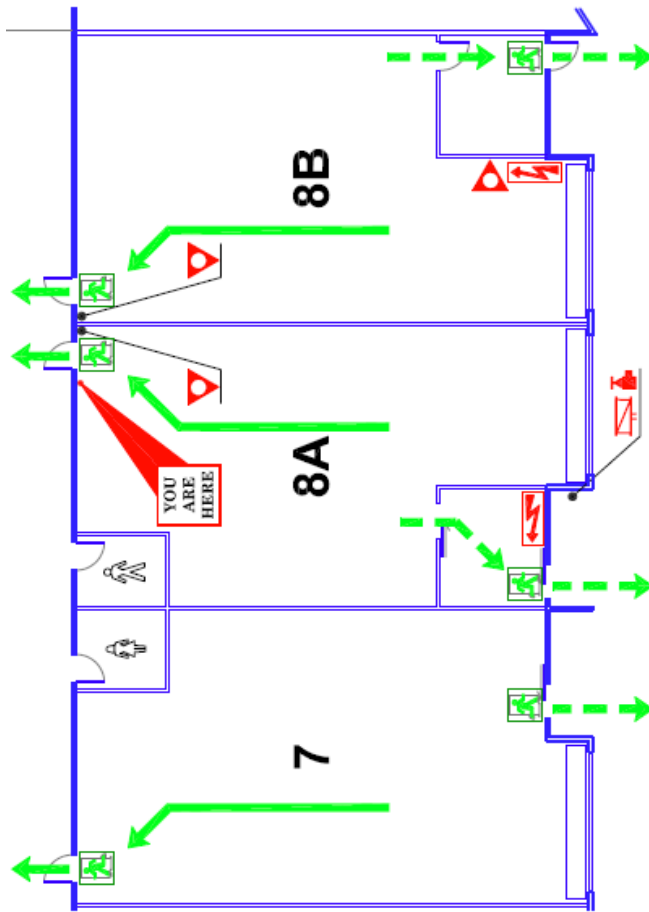
**Fire Evacuation Diagrams continued**

25 Michlin St, Moorooka, Qld 4105  
-Management in Use Emergency Fire Plan

August 2011

# FIRE EVACUATION DIAGRAM

**Moorooka Industrial Village  
BUILDING B - SHED 8A  
25 Michlin Street  
Moorooka Qld 4105**



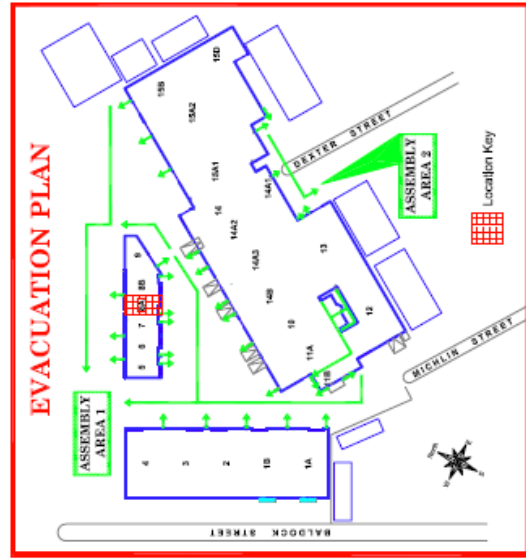
**LEGEND**

- FIRE EXTINGUISHER  
Stand well back from the fire (two to four paces)  
Always face the fire with your back to a clear doorway
- FIRE HOSE REEL  
Pull up on the end of the hose
- FIRE HYDRANT  
Aim directly at base of the fire
- EMERGENCY EXIT  
Squeeze lever
- EXIT PATH  
Move slowly towards the fire (remain one pace away)
- ALTERNATE EXIT PATH
- ELECTRICAL SWITCHBOARD

**FIRE EXTINGUISHER OPERATION**

**P**ull up on the end of the hose  
**A**im directly at base of the fire  
**S**queeze lever  
**M**ove slowly towards the fire (remain one pace away)

**DO NOT USE WATER ON OR NEAR ELECTRICAL EQUIPMENT**



**EMERGENCY ALARM PROCEDURES**

**There are No Automatic or Manual fire warning systems installed in this building**

**FIRE WARNING CAN ONLY BE ACHIEVED BY 'Verbal Expression'**

**ALL STAFF AND VISITORS SHOULD BE MADE AWARE OF THIS SITUATION**

**WHEN A FIRE WARNING IS GIVEN YOU ARE REQUIRED TO PREPARE FOR AN EVACUATION**

- ☐ All Visitors and Staff not involved in Fire Warden Duties are to comply with the directions of the Fire Wardens when evacuating the building to the Assembly Area (refer Evacuation Plan)
- ☐ Fire Wardens to check the Emergency Services have been called
- ☐ Fire Wardens to check all rooms accounting for all occupants at the time of the alarm (if Safe)
- ☐ Secure equipment and valuables (Only, if Safe)
- ☐ When control is established AND IT IS SAFE, fight the fire using the appropriate fire extinguisher

**ALWAYS TAKE INSTRUCTIONS FROM THE ATTENDING EMERGENCY SERVICES PERSONNEL**

**DO NOT RE-ENTER THE BUILDING UNTIL IT IS DECLARED SAFE TO DO SO**

**To call Emergency Services - Dial '000' (triple zero)**

**DIAL '000' TO CALL  
EMERGENCY SERVICES**

Identify Impaired Persons should evacuate IMMEDIATELY on hearing a Fire Alarm issued by a notified Person

**DeMartini Fletcher**  
Property Development & Investment

**JAMES C HAYES & ASSOCIATES**  
Nominated Fire Risk Assessor  
Phone: 07 559 4457  
Fax: 07 559 0088  
www.jchayes.com.au

Validation Date: March 2012

**Fire Evacuation Diagrams continued**

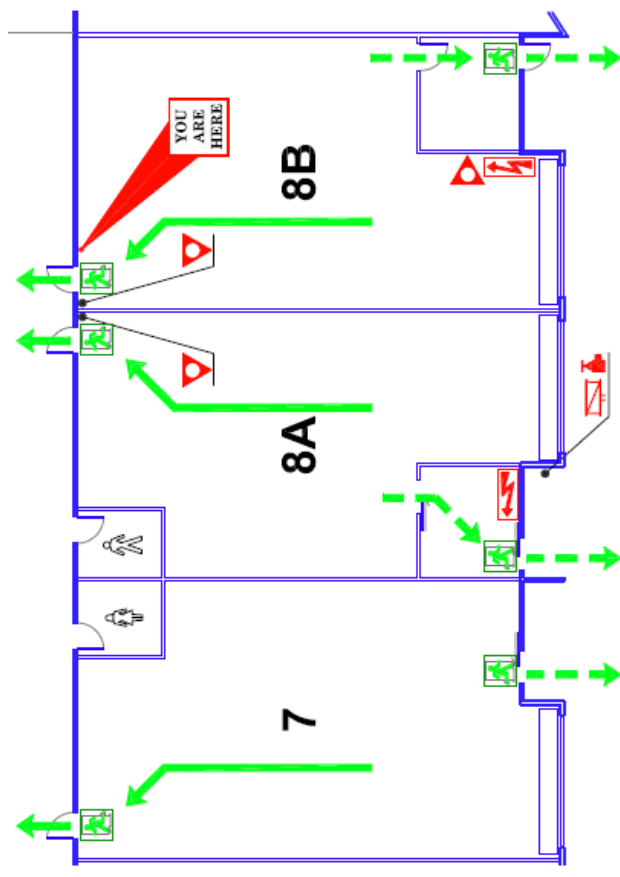
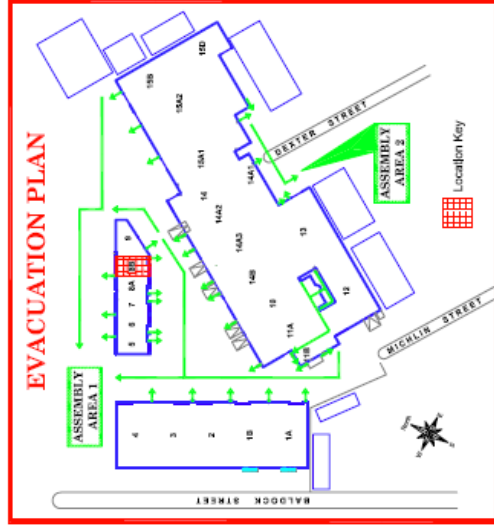
# FIRE EVACUATION DIAGRAM

**Moorooka Industrial Village  
BUILDING B - SHED 8B**  
25 Michlin Street  
Moorooka Qld 4105

**FIRE EXTINGUISHER OPERATION**  
Stand well back from the fire (two to four persons)  
Always face the fire with your back to a clear doorway  
**P**ull out the handle  
**A**im directly at base of the fire  
**S**queeze lever  
**S**weep, sweeping side to side then to the middle  
Always stand 1m away from the fire (keep one meter away)

**DO NOT USE WATER ON OR NEAR ELECTRICAL EQUIPMENT**

- LEGEND**
- FIRE EXTINGUISHER
  - FIRE HOSE REEL
  - FIRE HYDRANT
  - EMERGENCY EXIT
  - EXIT PATH
  - ALTERNATE EXIT PATH
  - ELECTRICAL SWITCHBOARD



**EMERGENCY ALARM PROCEDURES**

There are No Automatic or Manual fire warning systems installed in this building

**FIRE WARNING CAN ONLY BE ACHIEVED BY 'Verbal Expression'**

ALL STAFF AND VISITORS SHOULD BE MADE AWARE OF THIS SITUATION

WHEN A FIRE WARNING IS GIVEN YOU ARE REQUIRED TO PREPARE FOR AN EVACUATION

- ☞ All Visitors and Staff not involved in Fire Warden Duties are to comply with the directions of the Fire Wardens when evacuating the building to the Assembly Area (refer Evacuation Plan)
- ☞ Fire Wardens to check the Emergency Services have been called
- ☞ Fire Wardens to check all rooms accounting for all occupants at the time of the alarm (If Safe)
- ☞ Secure equipment and valuables (Only if Safe)
- ☞ When control is established AND IT IS SAFE, fight the fire using the appropriate fire extinguisher

**ALWAYS TAKE INSTRUCTIONS FROM THE ATTENDING EMERGENCY SERVICES PERSONNEL**

**DO NOT RE-ENTER THE BUILDING UNTIL IT IS DECLARED SAFE TO DO SO**

**To call Emergency Services - Dial '000' (triple zero)**

**DIAL '000' TO CALL  
EMERGENCY SERVICES**

Locally Impaired Persons should  
contact the Fire Alarm  
Alarm issued by a nominated Person

**DeMartini Fletcher**  
Property Development & Investment

Validated Date: March 2012

**JAMES C. FLETCHER & ASSOCIATES**  
100/101 BALROCK STREET, MOOROOKA QLD 4105  
Tel: 07 5511 1111 Fax: 07 5511 1112



## Fire Evacuation Diagrams continued

# FIRE EVACUATION DIAGRAM

Moorooka Industrial Village  
**BUILDING B - SHED 9**  
 25 Michlin Street  
 Moorooka Qld 4105

**DIAL '000' TO CALL EMERGENCY SERVICES**

Most of the Disabled Persons should evacuate IMMEDIATELY on hearing a Fire Alarm assisted by a non-disabled Person

**EMERGENCY ALARM PROCEDURES**

There are No Automatic or Manual fire warning systems installed in this building

☛ FIRE WARNING CAN ONLY BE ACHIEVED BY 'Verbal Expression'

ALL STAFF AND VISITORS SHOULD BE MADE AWARE OF THIS SITUATION

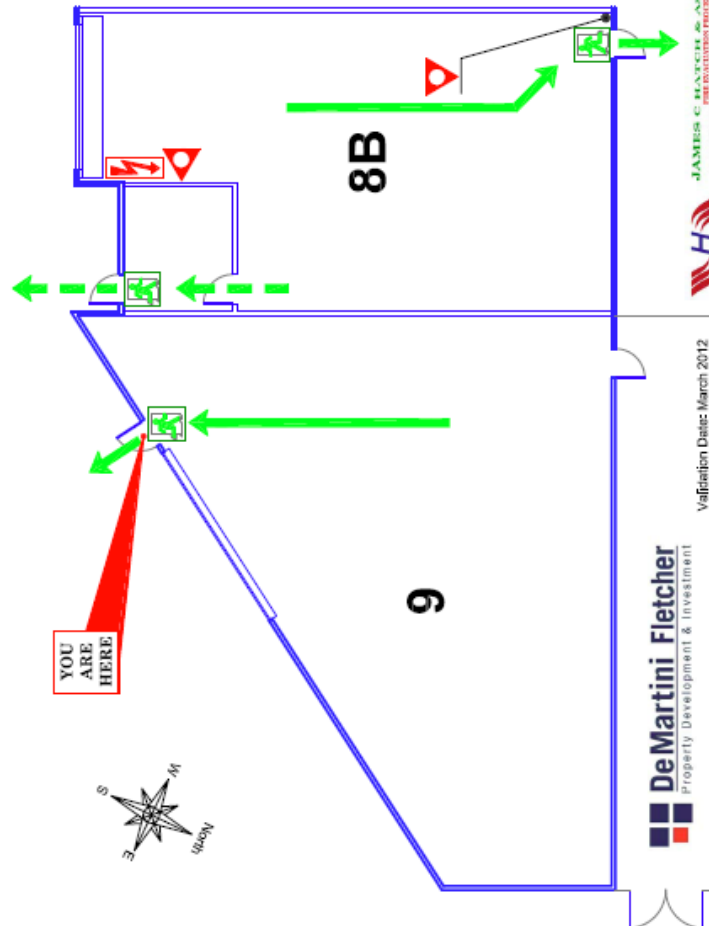
**WHEN A FIRE WARNING IS GIVEN YOU ARE REQUIRED TO PREPARE FOR AN EVACUATION**

- ☛ All Visitors and Staff not involved in Fire Warden Duties are to comply with the directions of the Fire Wardens when evacuating the building to the Assembly Area (refer Evacuation Plan)
- ☛ Fire Wardens to check the Emergency Services have been called
- ☛ Fire Wardens to check all rooms accounting for all occupants at the time of the alarm (If Safe)
- ☛ Secure equipment and variables (Only if Safe)
- ☛ When control is established AND IT IS SAFE, fight the fire using the appropriate fire extinguisher

**ALWAYS TAKE INSTRUCTIONS FROM THE ATTENDING EMERGENCY SERVICES PERSONNEL.**

**DO NOT RE-ENTER THE BUILDING UNTIL IT IS DECLARED SAFE TO DO SO**

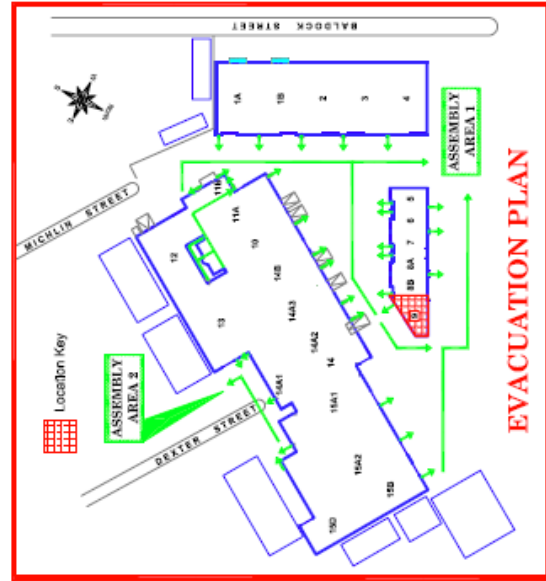
**To call Emergency Services - Dial '000' (triple zero)**



DeMartini Fletcher Property Development & Investment  
 Verification Date: March 2012  
 JAMES C HATCH & ASSOCIATES  
 No. 107-109 HAY STREET, MOOROOKA QLD 4105  
 PH (07) 5531 5531 FAX (07) 5531 5532  
 WWW.DMFL.COM.AU

**LEGEND**

- Fire extinguisher (Always back from the fire (two to four paces) Always face the fire with your back to a clear doorway)
- Fire hose reel (Put it on the end of the hose)
- Fire hydrant (Aim directly at base of the fire)
- Emergency exit (Squeeze lever)
- Exit path (Swivel, carefully with a slow flow to fill motion. Move slowly towards the fire (towards one zone away))
- Alternate exit path (Move slowly towards the fire (towards one zone away))
- Electrical switchboard (DO NOT USE WATER ON OR NEAR ELECTRICAL EQUIPMENT)



Fire Evacuation Diagrams continued

**FIRE  
EVACUATION  
DIAGRAM**

**Moorooka Industrial Village  
BUILDING C - SHED 10  
25 Michlin Street  
Moorooka Qld 4105**

**EMERGENCY ALARM PROCEDURES**  
Installed in the building is a Fire Sprinkler System.  
There are No Automatic or Manual fire warning systems installed in this building

☞ FIRE WARNING CAN ONLY BE ACHIEVED BY 'Verbal Expression'  
ALL STAFF AND VISITORS SHOULD BE AWARE OF THIS SITUATION

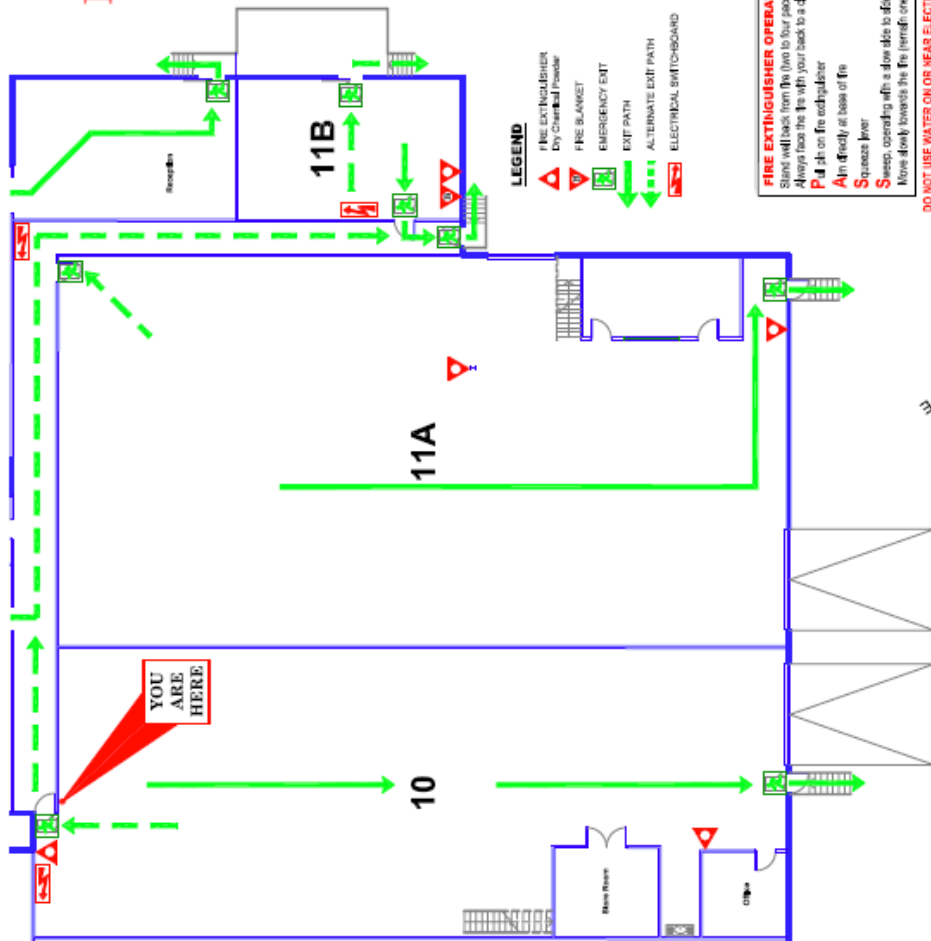
**WHEN A FIRE WARNING IS GIVEN YOU ARE REQUIRED TO PREPARE FOR AN EVACUATION**

- ☞ All Visitors and Staff not involved in Fire Warden Duties are to comply with the directions of the Fire Wardens when evacuating the building to the Assembly Area (refer Evacuation Plan)
- ☞ Fire Wardens to check the Emergency Services have been called
- ☞ Fire Wardens to check all rooms accounting for all occupants at the time of the alarm (If Safe)
- ☞ Secure equipment and valuables (Only if Safe)
- ☞ When control is established AND IT IS SAFE, fight the fire using the appropriate fire extinguisher

**ALWAYS TAKE INSTRUCTIONS FROM THE ATTENDING EMERGENCY SERVICES PERSONNEL**

**DO NOT RE-ENTER THE BUILDING UNTIL IT IS DECLARED SAFE TO DO SO**

**To call Emergency Services - Dial '000' (triple zero)**

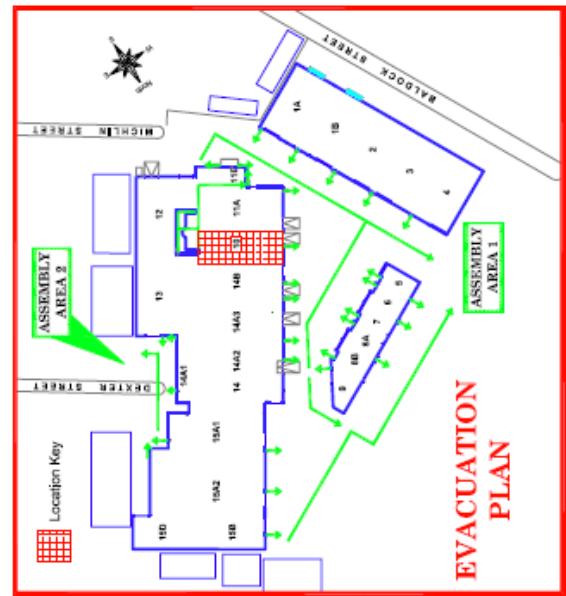


**DIAL '000' TO CALL  
EMERGENCY SERVICES**

Mobility Impaired Persons should evacuate IMMEDIATELY on hearing a Fire Alarm assisted by a nominated Person

**FIRE EXTINGUISHER OPERATION**  
Stand well back from the fire (two to four paces)  
Always face the fire with your back to a clear doorway  
**P**ull pin on the extinguisher  
**A**im directly at base of fire  
**S**queeze lever  
**S**wEEP, operating with a slow side to side motion  
Move slowly towards the fire (length one pace away)

**DO NOT USE WATER ON OR NEAR ELECTRICAL EQUIPMENT**



**JAMES CHANDEL & ASSOCIATES**  
REGISTERED FIRE ENGINEERS  
REGISTERED ELECTRICAL ENGINEERS  
REGISTERED PLUMBERS

**DeMartini Fletcher**  
Property Development & Investment

Validation Date: March 2012

**Fire Evacuation Diagrams continued**

# FIRE EVACUATION DIAGRAM

**Moorooka Industrial Village  
BUILDING C - SHED 11A  
25 Michlin Street  
Moorooka Qld 4105**

**FIRE EXTINGUISHER OPERATION**  
Stand well back from the fire (two to four paces)  
Always face the fire with your feet to a clear doorway  
**P**ull pin on the extinguisher  
**A**im directly at base of fire  
**S**queeze lever  
**S**wEEP, operating with a slow 4/6 to 4/8 motion  
**M**ove slowly towards the fire (remain one pace away)

**DO NOT USE WATER ON OR NEAR ELECTRICAL EQUIPMENT**

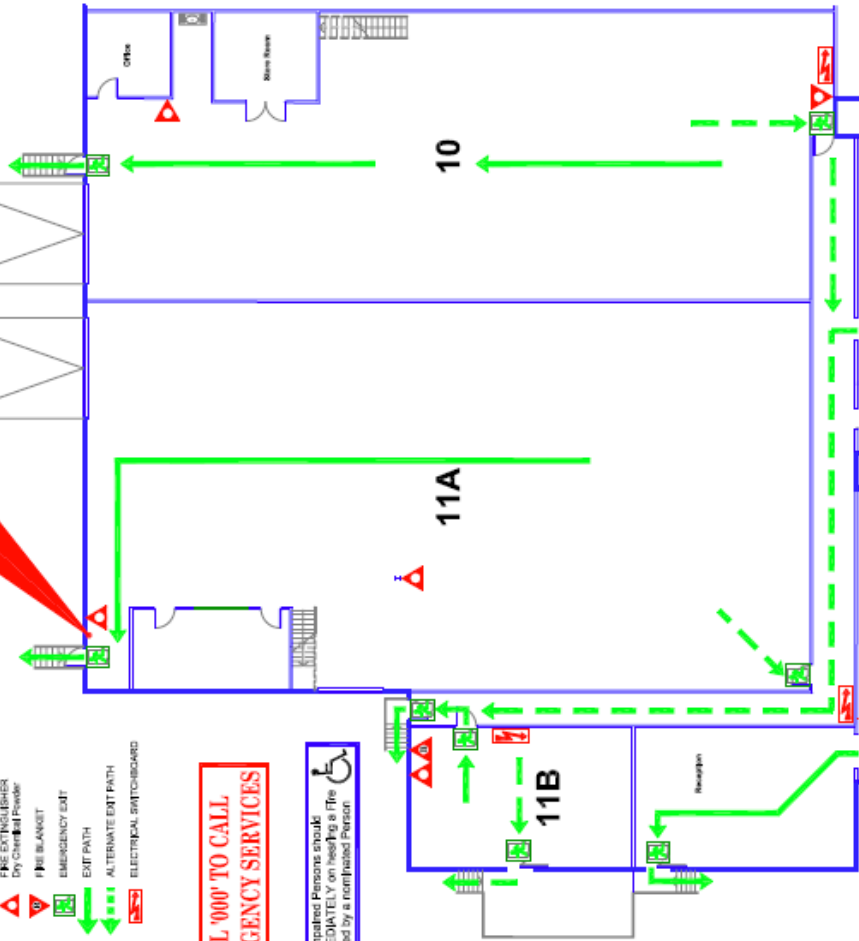
**LEGEND**

- FIRE EXTINGUISHER
- Dry Chemical Powder
- FIRE BLANKET
- EMERGENCY EXIT
- EXIT PATH
- ALTERNATE EXIT PATH
- ELECTRICAL SWITCHBOARD

DIAL '000' TO CALL EMERGENCY SERVICES

Mobility Impaired Persons should evacuate IMMEDIATELY on hearing a Fire Alarm assisted by a non-impaired Person

YOU ARE HERE



**EMERGENCY ALARM PROCEDURES**  
Installed in the building is a Fire Sprinkler System.  
There are No Automatic or Manual fire warning systems installed in this building

**FIRE WARNING CAN ONLY BE ACHIEVED BY 'Verbal Expression'**

ALL STAFF AND VISITORS SHOULD BE MADE AWARE OF THIS SITUATION

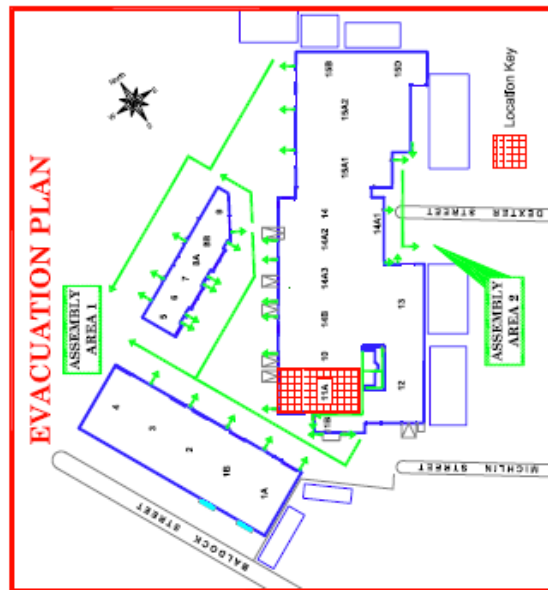
WHEN A FIRE WARNING IS GIVEN YOU ARE REQUIRED TO PREPARE FOR AN EVACUATION

- ☐ All Visitors and Staff not involved in Fire Warden Duties are to comply with the directions of the Fire Wardens when evacuating the building to the Assembly Area (refer Evacuation Plan)
- ☐ Fire Wardens to check the Emergency Services have been called
- ☐ Fire Wardens to check all rooms accounting for all occupants at the time of the alarm (If Safe)
- ☐ Secure equipment and valuables (Only if Safe)
- ☐ When control is established AND IT IS SAFE, fight the fire using the appropriate fire extinguisher

**ALWAYS TAKE INSTRUCTIONS FROM THE ATTENDING EMERGENCY SERVICES PERSONNEL**

**DO NOT RE-ENTER THE BUILDING UNTIL IT IS DECLARED SAFE TO DO SO**

To call Emergency Services - Dial '000' (triple zero)



Validation Date: March 2012

**DeMartini Fletcher**  
Property Development & Investment

**JAMES C. HATCHER & ASSOCIATES**  
Architects 101 Stirling Highway, Moorooka QLD 4105  
Phone: 07 5514 4422 Fax: 07 5514 4423 Email: james@jcharchitect.com.au

Fire Evacuation Diagrams continued

**EMERGENCY ALARM PROCEDURES**

Installed in the building is a Fire Sprinkler System.  
There are No Automatic or Manual fire warning systems installed in this building

A FIRE WARNING CAN ONLY BE ACHIEVED BY 'Verbal Expression'  
ALL STAFF AND VISITORS SHOULD BE MADE AWARE OF THIS SITUATION

WHEN A FIRE WARNING IS GIVEN YOU ARE REQUIRED TO PREPARE FOR AN EVACUATION

- ⇒ All Visitors and Staff not involved in Fire Warden Duties are to comply with the directions of the Fire Wardens when evacuating the building to the Assembly Area (refer Evacuation Plan)
- ⇒ Fire Wardens to check the Emergency Services have been called
- ⇒ Fire Wardens to check all rooms accounting for all occupants at the time of the alarm (If Safe)
- ⇒ Secure equipment and valuables (Only if Safe)
- ⇒ When control is established AND IT IS SAFE, fight the fire using the appropriate fire extinguisher

ALWAYS TAKE INSTRUCTIONS FROM THE ATTENDING EMERGENCY SERVICES PERSONNEL

DO NOT RE-ENTER THE BUILDING UNTIL IT IS DECLARED SAFE TO DO SO

**To call Emergency Services - Dial '000' (triple zero)**

## FIRE EVACUATION DIAGRAM

**Moorooka Industrial Village  
BUILDING C - SHED 11B  
25 Michlin Street  
Moorooka Qld 4105**

**FIRE EXTINGUISHER OPERATION**

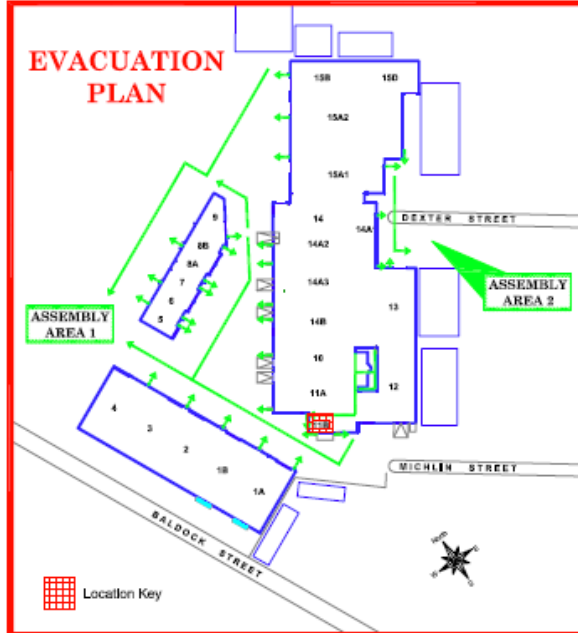
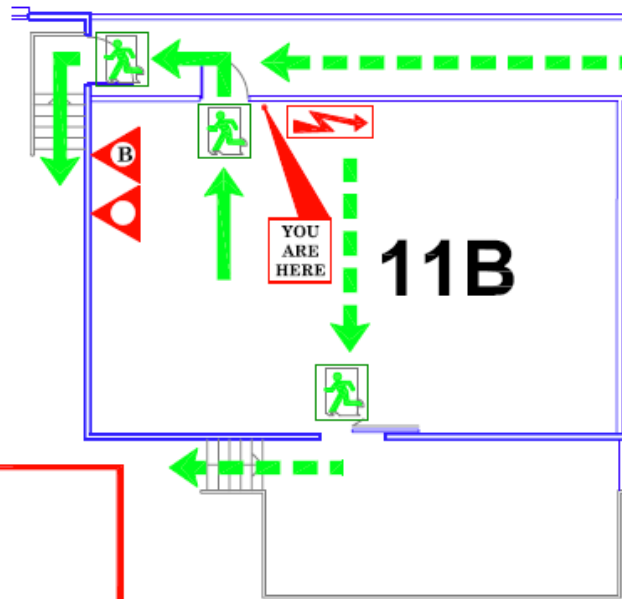
Stand well back from the fire (two to four paces)  
Always face the fire with your back to a clear doorway

**P**ull pin on the extinguisher  
**A**im directly at base of the fire  
**S**queeze lever  
**S**weep, operating with a slow side to side motion  
Move slowly towards the fire (remain one pace away)

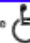
DO NOT USE WATER ON OR NEAR ELECTRICAL EQUIPMENT

**LEGEND**

-  FIRE EXTINGUISHER  
Dry Chemical Powder
-  FIRE BLANKET
-  EMERGENCY EXIT
-  EXIT PATH
-  ALTERNATE EXIT PATH
-  ELECTRICAL SWITCHBOARD



**DIAL '000' TO CALL  
EMERGENCY SERVICES**

Mobility Impaired Persons should  
evacuate IMMEDIATELY on hearing a Fire  
Alarm assisted by a nominated Person 

 **JAMES C HATCHER & ASSOCIATES**  
FIRE EVACUATION PROCEDURES  
Telephone: (07) 5534 6444 Fax: (07) 5534 6444 Email: james@jchatcher.com.au  
JCH 20 781 622 622 - BSA License 62262

Validation Date: March 2012

 **DeMartini Fletcher**  
Property Development & Investment

### Fire Evacuation Diagrams continued

25 Michlin St, Moorooka, Qld 4105  
-Management in Use Emergency Fire Plan

August 2011

**FIRE EVACUATION DIAGRAM**

**Moorooka Industrial Village  
BUILDING C - Amenities  
25 Michlin Street  
Moorooka Qld 4105**

**EMERGENCY ALARM PROCEDURES**  
Installed in the building is a Fire Sprinkler System.  
There are No Automatic or Manual fire warning systems installed in this building  
FIRE WARNING CAN ONLY BE ACHIEVED BY 'Verbal Expression'

ALL STAFF AND VISITORS SHOULD BE MADE AWARE OF THIS SITUATION

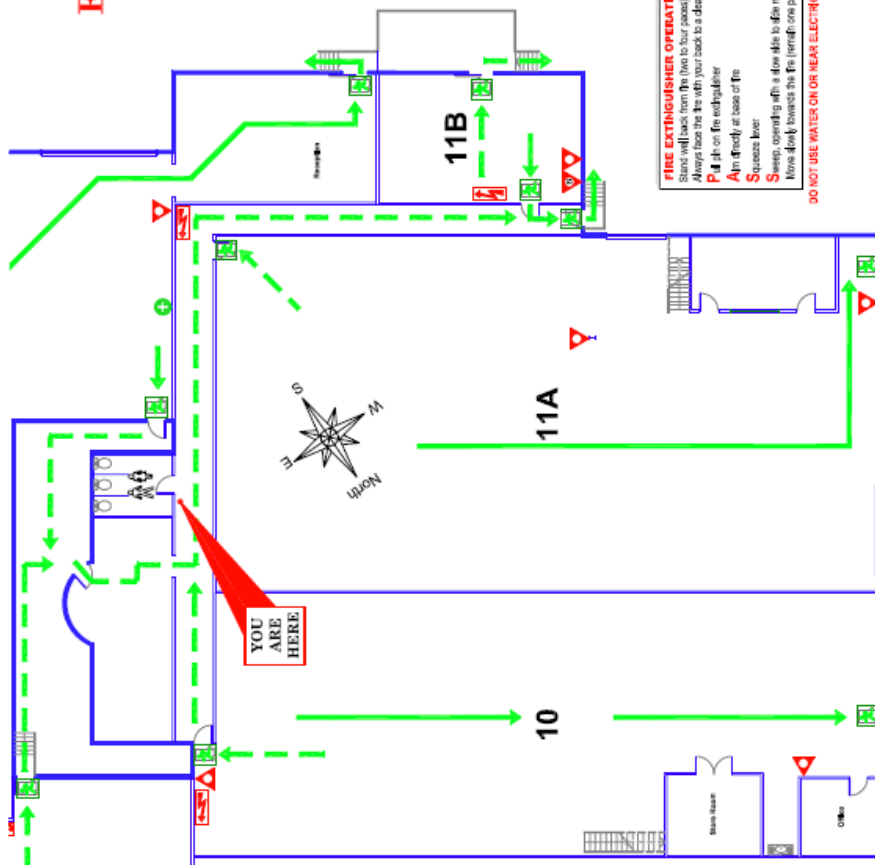
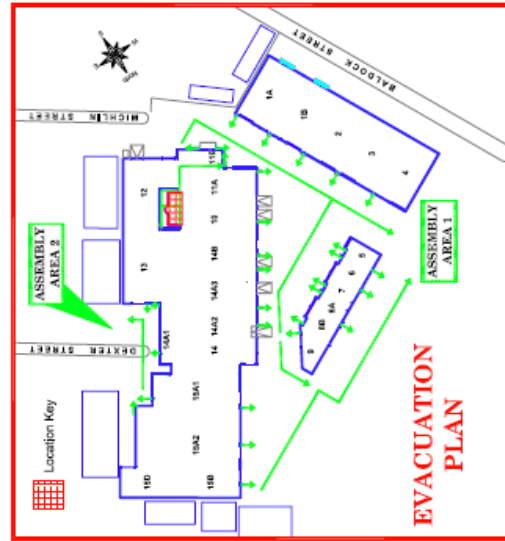
WHEN A FIRE WARNING IS GIVEN YOU ARE REQUIRED TO PREPARE FOR AN EVACUATION

- All Visitors and Staff not involved in Fire Warden duties are to comply with the directions of the Fire Wardens when evacuating the building to the Assembly Area (refer Evacuation Plan)
- Fire Wardens to check the Emergency Services have been called
- Fire Wardens to check all rooms accounting for all occupants at the time of the alarm (If Safe)
- Secure equipment and valuables (Only if Safe)
- When control is established AND IT IS SAFE, fight the fire using the appropriate fire extinguisher

**ALWAYS TAKE INSTRUCTIONS FROM THE ATTENDING EMERGENCY SERVICES PERSONNEL**

**DO NOT RE-ENTER THE BUILDING UNTIL IT IS DECLARED SAFE TO DO SO**

**To call Emergency Services - Dial '000' (triple zero)**



**FIRE EXTINGUISHER OPERATION**  
Stand well back from the fire (two to four paces)  
Always raise the fire with your back to a clear doorway  
Pull pin on fire extinguisher  
Aim directly at base of fire  
Squeeze lever  
Sweep, covering with a flow side to flow motion  
Move slowly towards the fire (reverse one pace step)

**DO NOT USE WATER ON OR NEAR ELECTRICAL EQUIPMENT**

Mobility Impaired Persons should evacuate IMMEDIATELY on hearing a Fire Alarm assisted by a non-impaired Person

**DeMartini Fletcher**  
Property Development & Investment

**LEGEND**

- FIRE EXTINGUISHER
- DRY-CHEMICAL EXTINGUISHER
- FIRE BLANKET
- EMERGENCY EXIT
- EXIT PATH
- ALTERNATE EXIT PATH
- ELECTRICAL SWITCHBOARD

**DIAL '000' TO CALL EMERGENCY SERVICES**

**JAMES G. MARTIN & ASSOCIATES**  
FIRE & SAFETY CONSULTANTS  
10/100 SOUTH STREET, MOOROOKA QLD 4105  
TEL: 07 5533 1111 FAX: 07 5533 1112

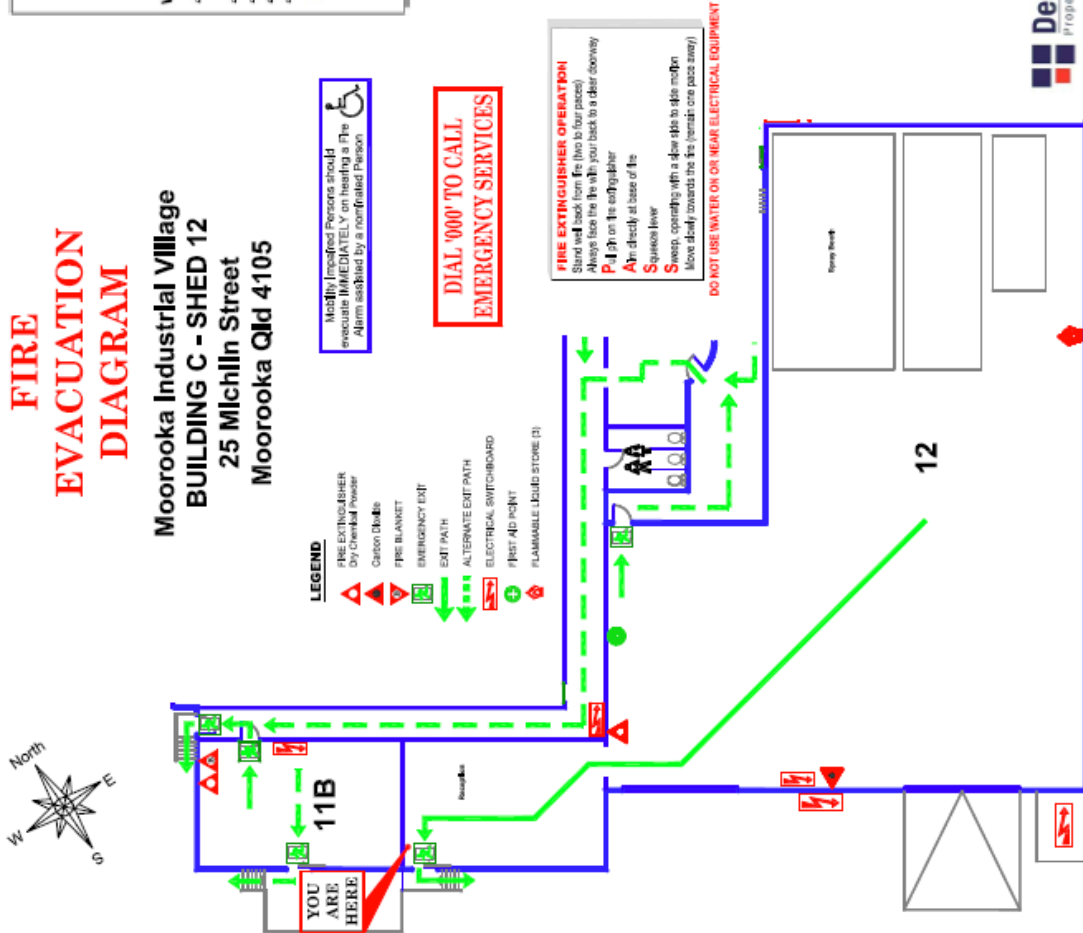
Validation Date: March 2012

**Fire Evacuation Diagrams continued**



# FIRE EVACUATION DIAGRAM

**Moorooka Industrial Village  
BUILDING C - SHED 12  
25 Michlin Street  
Moorooka Qld 4105**



**EMERGENCY ALARM PROCEDURES**  
Installed in the building is a Fire Sprinkler System.  
**There are No Automatic, or Manual fire warning systems installed in this building**

# FIRE WARNING CAN ONLY BE ACHIEVED BY **'Verbal Expression'**  
ALL STAFF AND VISITORS SHOULD BE MADE AWARE OF THIS SITUATION

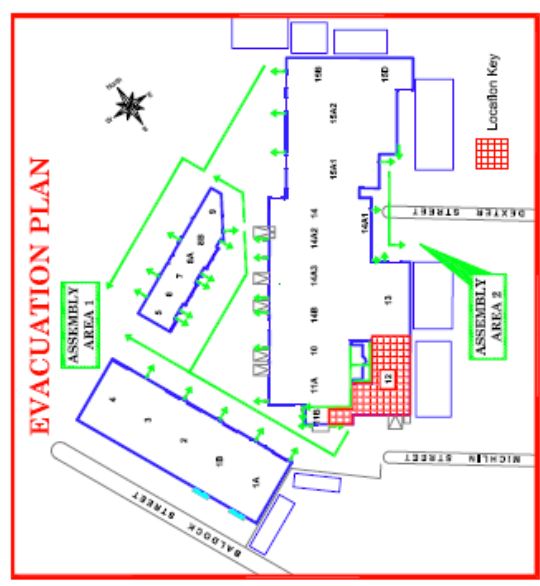
**WHEN A FIRE WARNING IS GIVEN YOU ARE REQUIRED TO PREPARE FOR AN EVACUATION**

- All Visitors and Staff not involved in Fire Warden Duties are to comply with the directions of the Fire Wardens when evacuating the building to the Assembly Area (refer Evacuation Plans)
- Fire Wardens to check the Emergency Services have been called
- Fire Wardens to check all rooms accounting for all occupants at the time of the alarm (If Safe)
- Secure equipment and valuables (Only if Safe)
- When control is established AND IT IS SAFE, fight the fire using the appropriate fire extinguisher

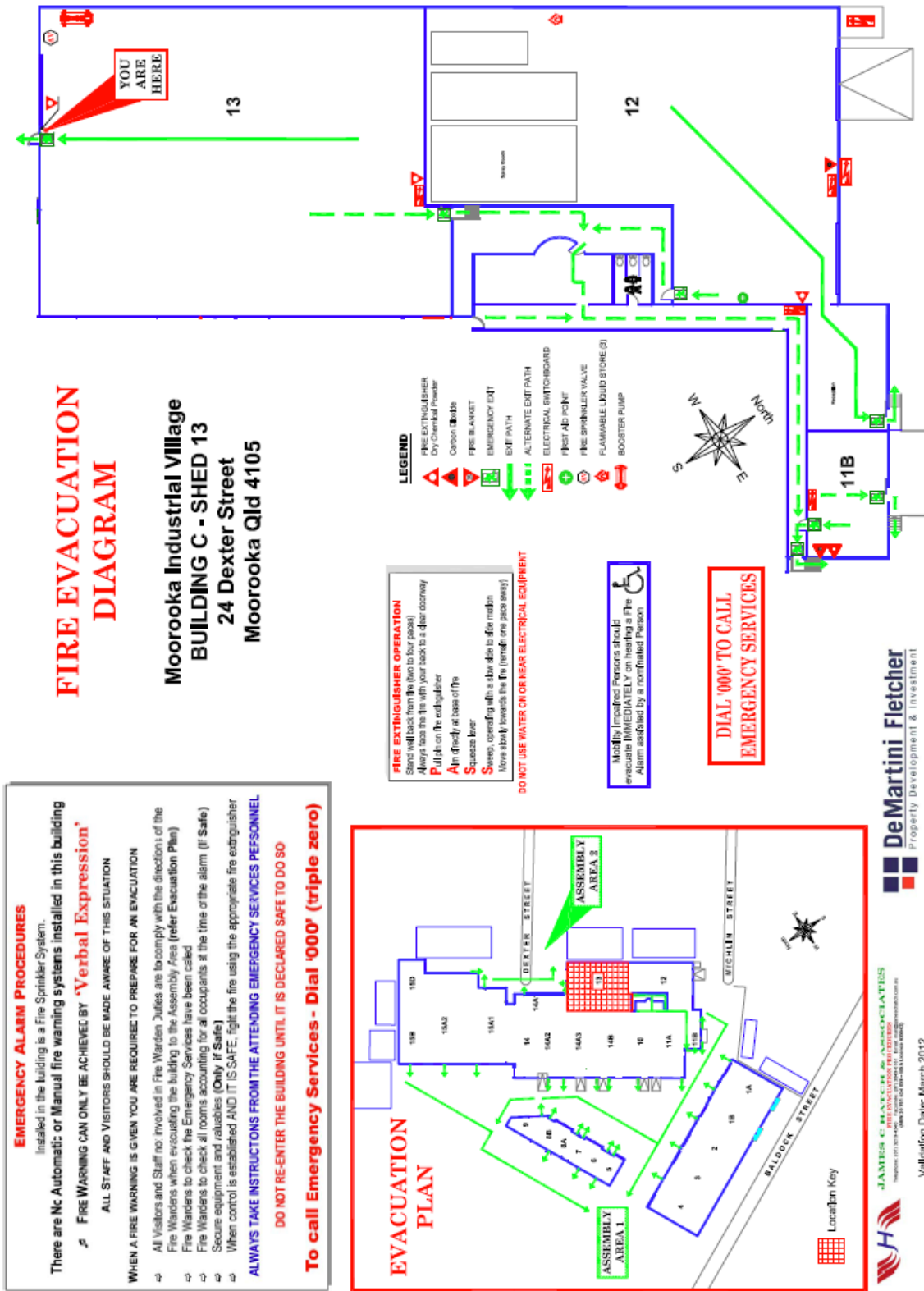
**ALWAYS TAKE INSTRUCTIONS FROM THE ATTENDING EMERGENCY SERVICES PERSONNEL**

**DO NOT RE-ENTER THE BUILDING UNTIL IT IS DECLARED SAFE TO DO SO**

**To call Emergency Services - Dial '000' (triple zero)**



**Fire Evacuation Diagrams continued**



Fire Evacuation Diagrams continued

# FIRE EVACUATION DIAGRAM

**Moorooka Industrial Village  
BUILDING C - SHED 14**  
25 Michlin Street  
Moorooka Qld 4105

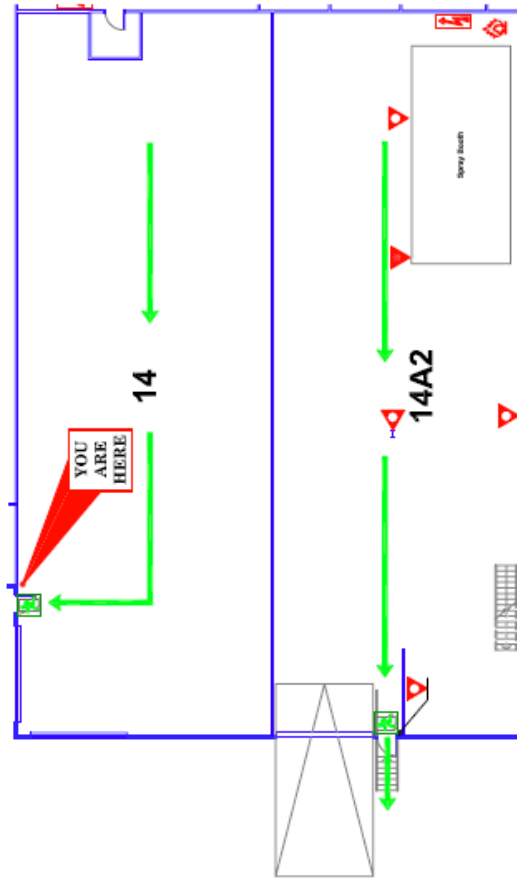
**DIAL '000' TO CALL  
EMERGENCY SERVICES**

Mobility Impaired Persons should  
evacuate IMMEDIATELY on hearing a Fire  
Alarm assigned by a non-impaired Person



**FIRE EXTINGUISHER OPERATION**  
Stand well back from the hose to four paces)  
Always face the fire with your back to a clear doorway  
**P**ull pin on the extinguisher  
**A**im directly at base of fire  
**S**queeze lever  
**S**wEEP, sweeping with a slow side to side motion  
Move slowly towards the fire (remain one pace away)

DO NOT USE WATER ON OR NEAR ELECTRICAL EQUIPMENT



**EMERGENCY ALARM PROCEDURES**  
Installed in the building is a Fire Sprinkler System.  
There are No Automatic or Manual fire warning systems installed in this building

- ☛ Fire WARNING CAN ONLY BE ACHIEVED BY 'Verbal Expression'

ALL STAFF AND VISITORS SHOULD BE MADE AWARE OF THIS SITUATION

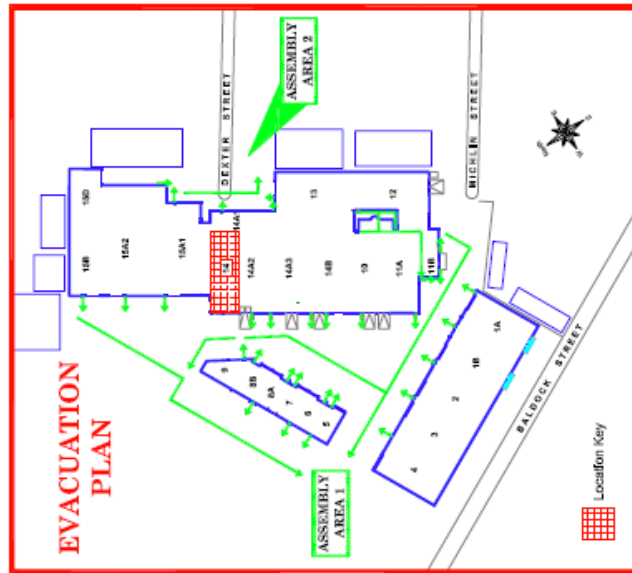
**WHEN A FIRE WARNING IS GIVEN YOU ARE REQUIRED TO PREPARE FOR AN EVACUATION**

- ☛ All Visitors and Staff not involved in Fire Warden Duties are to comply with the direction(s) of the Fire Wardens when evacuating the building to the Assembly Area (refer Evacuation Plan)
- ☛ Fire Wardens to check the Emergency Services have been called
- ☛ Fire Wardens to check all rooms accounting for all occupants at the time of the alarm (If Safe)
- ☛ Secure equipment and materials (Only if Safe)
- ☛ When control is established AND IT IS SAFE, fight the fire using the appropriate fire extinguisher

**ALWAYS TAKE INSTRUCTORS FROM THE ATTENDING EMERGENCY SERVICES PERSONNEL**

DO NOT RE-ENTER THE BUILDING UNTIL IT IS DECLARED SAFE TO DO SO

To call Emergency Services - Dial '000' (triple zero)



**JAMES CLAYTON & ASSOCIATES**  
FIRE EVACUATION PLAN 2012  
25 MICHLIN STREET MOOROOKA QLD 4105  
PH: 07 5531 1111 FAX: 07 5531 1112

Validation Date: March 2012

**DeMartini Fletcher**  
Property Development & Investment

**Fire Evacuation Diagrams continued**

**EMERGENCY ALARM PROCEDURES**

Installed in the building is a Fire Sprinkler System.  
There are No Automatic or Manual fire warning systems installed in this building

FIRE WARNING CAN ONLY BE ACHIEVED BY 'Verbal Expression'

ALL STAFF AND VISITORS SHOULD BE MADE AWARE OF THIS SITUATION

WHEN A FIRE WARNING IS GIVEN YOU ARE REQUIRED TO PREPARE FOR AN EVACUATION

- ⇒ All Visitors and Staff not involved in Fire Warden Duties are to comply with the directions of the Fire Wardens when evacuating the building to the Assembly Area (refer Evacuation Plan)
- ⇒ Fire Wardens to check the Emergency Services have been called
- ⇒ Fire Wardens to check all rooms accounting for all occupants at the time of the alarm (If Safe)
- ⇒ Secure equipment and valuables (Only if Safe)
- ⇒ When control is established AND IT IS SAFE, fight the fire using the appropriate fire extinguisher


ALWAYS TAKE INSTRUCTIONS FROM THE ATTENDING EMERGENCY SERVICES PERSONNEL

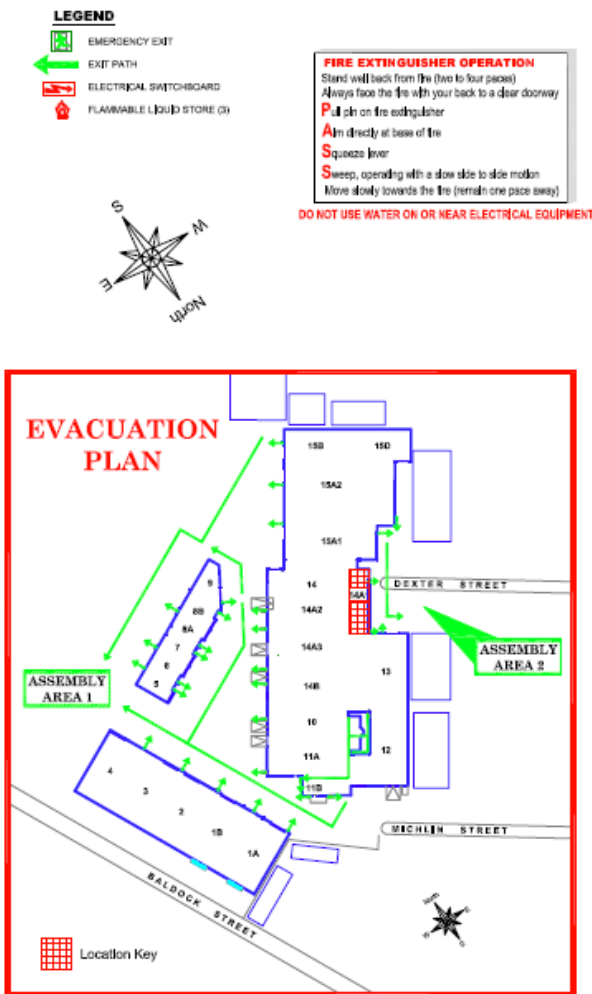
DO NOT RE-ENTER THE BUILDING UNTIL IT IS DECLARED SAFE TO DO SO

**To call Emergency Services - Dial '000' (triple zero)**

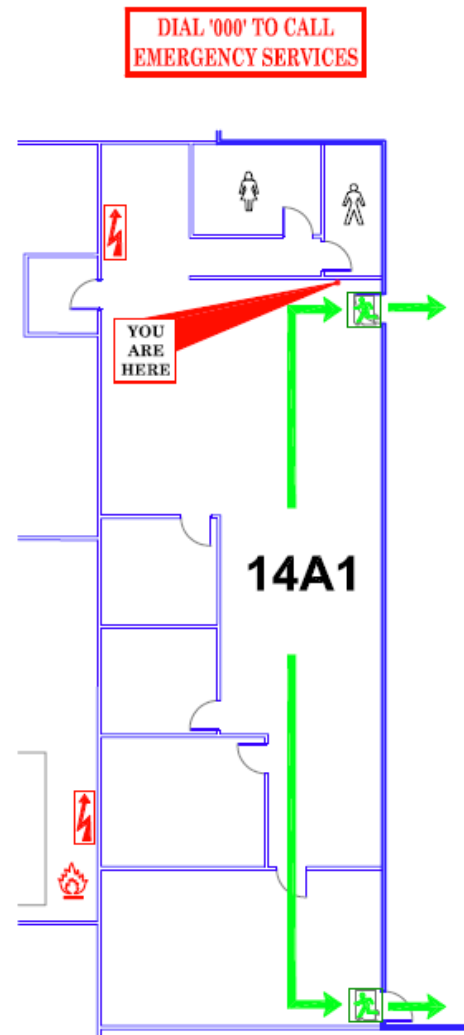
## FIRE EVACUATION DIAGRAM

**Moorooka Industrial Village  
BUILDING C - SHED 14A1  
24 Dexter Street  
Moorooka Qld 4105**

Mobility Impaired Persons should  
evacuate IMMEDIATELY on hearing a Fire  
Alarm assisted by a nominated Person 



 **JAMES CHATTER & ASSOCIATES**  
FIRE EVACUATION PROCEDURES  
Telephone: 07 534 6244, Fax: 07 534 6245, Email: james@jameschatter.com.au  
Validatlon Date: March 2012



 **DeMartini Fletcher**  
Property Development & Investment

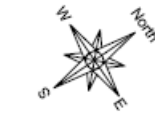
### Fire Evacuation Diagrams continued

# FIRE EVACUATION DIAGRAM

**Moorooka Industrial Village  
BUILDING C - SHED 14A2  
25 Michlin Street  
Moorooka Qld 4105**

DIAL '000' TO CALL  
EMERGENCY SERVICES

Mobility Impaired Persons should  
evacuate IMMEDIATELY on hearing a Fire  
Alarm assisted by a nominated person

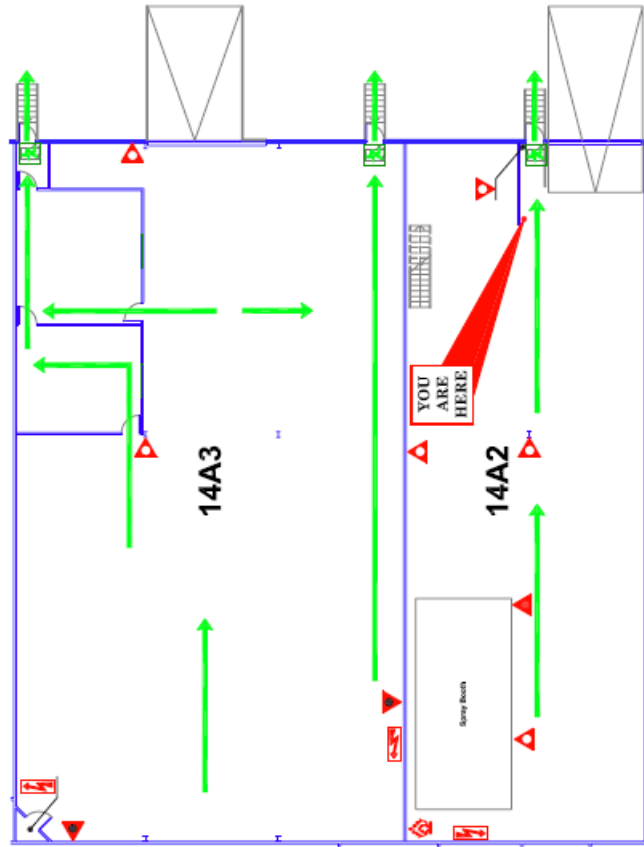


- LEGEND**
- ▲ FIRE EXTINGUISHER
  - ▲ Pressurised Water
  - ▲ Dry Chemical Powder
  - ▲ Carbon Dioxide
  - ▲ EMERGENCY EXT
  - ➔ EXIT PATH
  - ⚡ ELECTRICAL SWITCHBOARD
  - ⚡ FLAMMABLE LIQUID STORE (F)

FIRE EXTINGUISHER OPERATION

Stand on the correct floor level  
Always face the fire with your back to a clear doorway  
Pull pin on the extinguisher  
Aim directly at base of the fire  
Squeeze lever  
Sweep, sweeping with a slow side to side motion  
Move slowly towards the fire (smash one pace away)

DO NOT USE WATER ON OR NEAR ELECTRICAL EQUIPMENT



EMERGENCY ALARM PROCEDURES

Installed in the building is a Fire Sprinkler-System.  
There are No Automatic or Manual fire warning systems installed in this building  
FIRE WARNING CAN ONLY BE ACHIEVED BY 'Verbal Expression'

ALL STAFF AND VISITORS SHOULD BE MADE AWARE OF THIS SITUATION

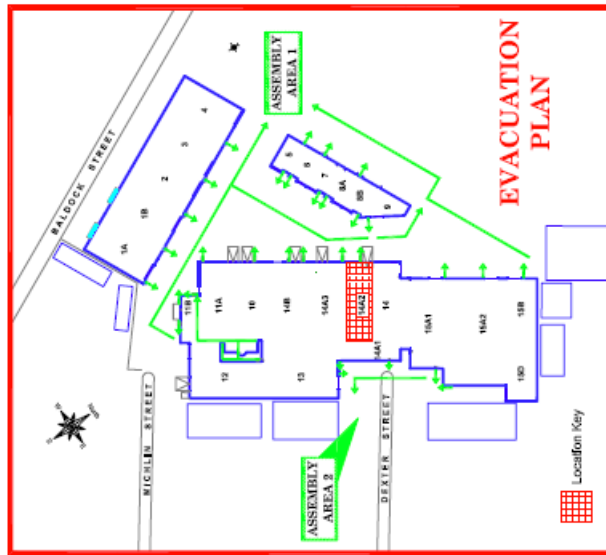
WHEN A FIRE WARNING IS GIVEN YOU ARE REQUIRED TO PREPARE FOR AN EVACUATION

- ➔ All Visitors and Staff no involved in Fire Warden duties to comply with the directions of the Fire Wardens when evacuating the building to the Assembly Area (refer Evacuation Plan)
- ➔ Fire Wardens to check the Emergency Services have been called
- ➔ Fire Wardens to check all rooms accounting for all occupants at the time of the alarm (I<sup>2</sup> Safe)
- ➔ Secure equipment and valuables (Only if Safe)
- ➔ When control is established AND IT IS SAFE, fight the fire using the appropriate fire extinguisher

ALWAYS TAKE INSTRUCTIONS FROM THE ATTENDING EMERGENCY SERVICES PERSONNEL

DO NOT RE-ENTER THE BUILDING UNTIL IT IS DECLARED SAFE TO DO SO

To call Emergency Services - Dial '000' (triple zero)



**JAMES C. HATCHER & ASSOCIATES**  
NATIONAL FIRE & SECURITY CONSULTANTS  
1000 ST. GEORGE'S ROAD, SUITE 1000, MOOROOKA QLD 4105  
PHONE 07 5561 0000 FAX 07 5561 0001

**DeMartini Fletcher**  
Property Development & Investment

Validation Date: March 2012

Fire Evacuation Diagrams continued



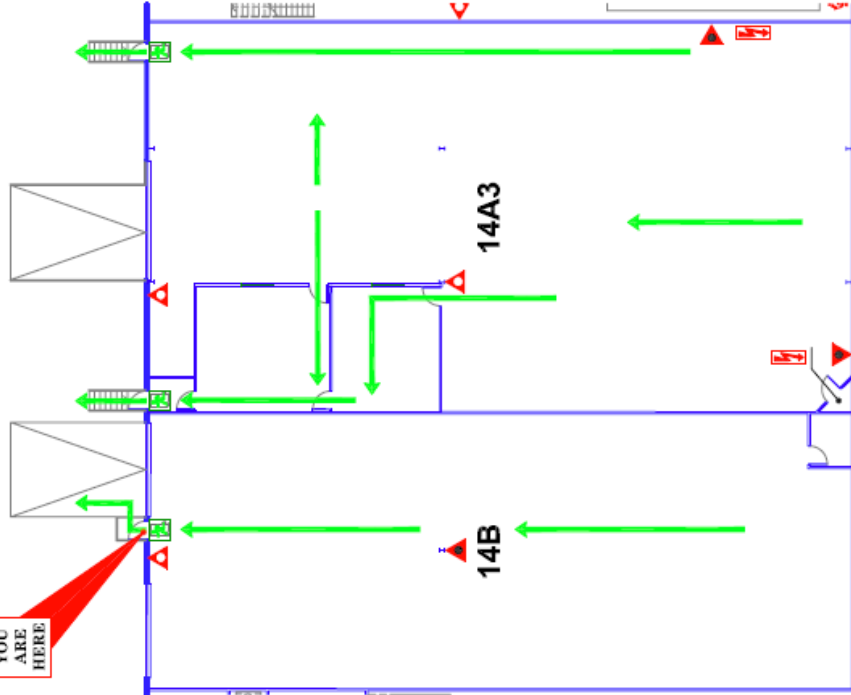
# FIRE EVACUATION DIAGRAM

**Moorooka Industrial Village  
BUILDING C - SHED 14B  
25 Michlin Street  
Moorooka Qld 4105**

**FIRE EXTINGUISHER OPERATION**  
Stand well back from the fire (two to four paces)  
Always face the fire with your back to a clear doorway  
**P**ull on the extinguisher  
**A**im directly at base of fire  
**S**queeze lever  
**S**wEEP, operating with a slow side to side motion  
Move slowly towards the fire (remain one pace away)

DO NOT USE WATER ON OR NEAR ELECTRICAL EQUIPMENT

**YOU  
ARE  
HERE**



- LEGEND**
- FIRE EXTINGUISHER
  - Dry Chemical Powder
  - Carbon Dioxide
  - EMERGENCY EXIT
  - EXIT PATH
  - ELECTRICAL SWITCHBOARD

**DIAL '000' TO CALL  
EMERGENCY SERVICES**

Mobility Impaired Persons should evacuate IMMEDIATELY on hearing a Fire Alarm activated by a notified Person.

**EMERGENCY ALARM PROCEDURES**  
Installed in the building is a Fire Sprinkler System.  
There are No Automatic or Manual fire warning systems installed in this building

⚡ FIRE WARNING CAN ONLY BE ACHIEVED BY 'Verbal Expression'

ALL STAFF AND VISITORS SHOULD BE MADE AWARE OF THIS SITUATION

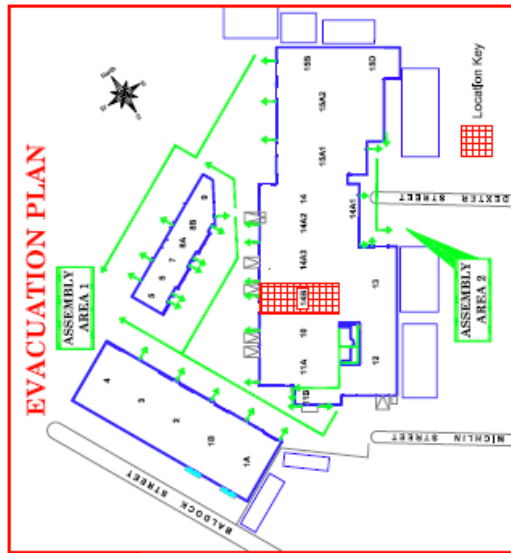
WHEN A FIRE WARNING IS GIVEN YOU ARE REQUIRED TO PREPARE FOR AN EVACUATION

- ⚡ All Visitors and Staff not involved in Fire Warden Duties are to comply with the directions of the Fire Wardens when evacuating the building to the Assembly Area (refer Evacuation Plan)
- ⚡ Fire Wardens to check the Emergency Services have been called
- ⚡ Fire Wardens to check all rooms accounting for all occupants at the time of the alarm (If Safe)
- ⚡ Secure equipment and valuables (Only if Safe)
- ⚡ When control is established AND IT IS SAFE, fight the fire using the appropriate fire extinguisher

**ALWAYS TAKE INSTRUCTIONS FROM THE ATTENDING EMERGENCY SERVICES PERSONNEL**

**DO NOT RE-ENTER THE BUILDING UNTIL IT IS DECLARED SAFE TO DO SO**

**To call Emergency Services - Dial '000' (triple zero)**



**DeMartini Fletcher**  
Property Development & Investment

**JAMES C. HATCHER & ASSOCIATES**  
FIRE EVACUATION CONSULTANTS  
100/100 ST. JOHN STREET, MOOROOKA QLD 4105  
WWW.JCHAS.COM.AU OR 07 552 6000

Validation Date: March 2012

**Fire Evacuation Diagrams continued**

# FIRE EVACUATION DIAGRAM

**Moorooka Industrial Village  
BUILDING C - SHED 15A1  
25 Michlin Street  
Moorooka Qld 4105**

**DIAL '000' TO CALL  
EMERGENCY SERVICES**

Modify Impaired Persons should  
evacuate IMMEDIATELY on hearing a Fire  
Alarm issued by a nominated Person

**FIRE EXTINGUISHER OPERATION**  
Stand well back from the fire (two to four paces)  
Always face the fire with your back to a clear doorway  
**P**ull pin on the end of the handle  
**A**im directly at base of the fire  
**S**queeze lever  
**S**wEEP, operating with a slow side to side motion  
**M**ove slowly towards the fire (within one pace away)

DO NOT USE WATER ON OR NEAR ELECTRICAL EQUIPMENT



- LEGEND**
- ▲ FIRE EXTINGUISHER  
Dry Chemical Powder
  - ▶ EMERGENCY EXIT
  - ▶ EXIT PATH
  - ⚡ ELECTRICAL SWITCHBOARD

**EMERGENCY ALARM PROCEDURES**  
Installed in the building is a Fire Sprinkler System.  
There are No Automatic or Manual fire warning systems installed in this building

☞ FIRE WARNING CAN ONLY BE ACHIEVED BY 'Verbal Expression'  
ALL STAFF AND VISITORS SHOULD BE MADE AWARE OF THIS SITUATION

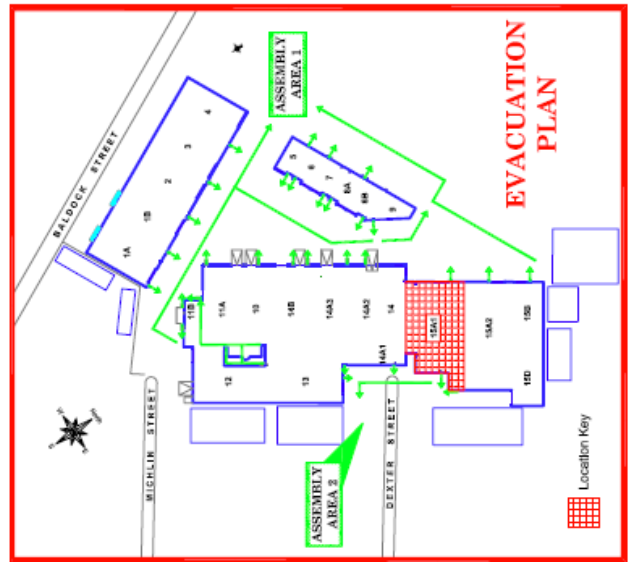
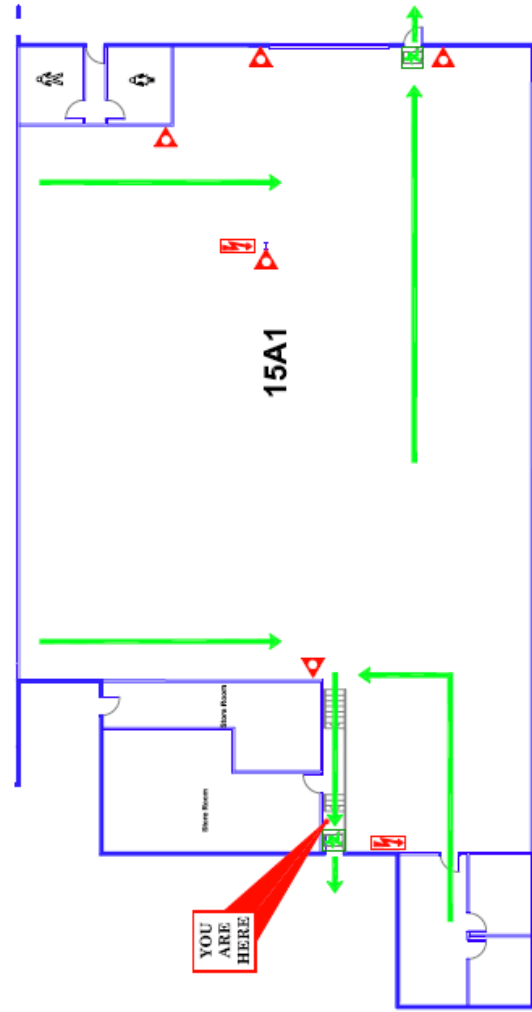
**WHEN A FIRE WARNING IS GIVEN YOU ARE REQUIRED TO PREPARE FOR AN EVACUATION**

- ☞ All Visitors and Staff not involved in Fire Warden Duties are to comply with the directions of the Fire Wardens when evacuating the building to the Assembly Area (refer Evacuation Plan)
- ☞ Fire Wardens to check the Emergency Services have been called
- ☞ Fire Wardens to check all rooms accounting for all occupants at the time of the alarm (If Safe)
- ☞ Secure equipment and valuables (Only if Safe)
- ☞ When control is established AND IT IS SAFE, fight the fire using the appropriate fire extinguisher

**ALWAYS TAKE INSTRUCTIONS FROM THE ATTENDING EMERGENCY SERVICES PERSONNEL.**

DO NOT RE-ENTER THE BUILDING UNTIL IT IS DECLARED SAFE TO DO SO

To call Emergency Services - Dial '000' (triple zero)



**DeMartini Fletcher**  
Property Development & Investment

**JAMES CHANER & ASSOCIATES**  
CONSULTING ENGINEERS  
10/110 BALDOOCK STREET, MOOROOKA QLD 4105  
PH: 07 5522 1100 FAX: 07 5522 1101

Validation Date: March 2012

**Fire Evacuation Diagrams continued**



**FIRE  
EVACUATION  
DIAGRAM**

**Moorooka Industrial Village  
BUILDING C - SHED 15A2  
25 Michlin Street  
Moorooka Qld 4105**

**EMERGENCY ALARM PROCEDURES**  
Installed in the building is a Fire Sprinkler-System.  
There are No Automatic; or Manual fire warning systems installed in this building

**FIRE WARNING CAN ONLY BE ACHIEVED BY 'Verbal Expression'**  
ALL STAFF AND VISITORS SHOULD BE MADE AWARE OF THIS SITUATION

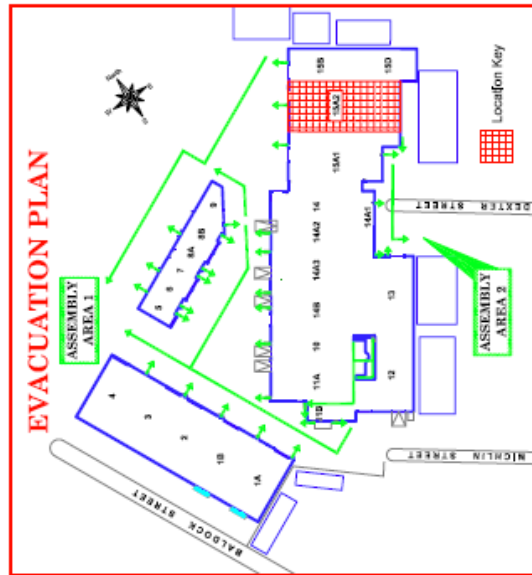
**WHEN A FIRE WARNING IS GIVEN YOU ARE REQUIRED TO PREPARE FOR AN EVACUATION**

- All Visitors and Staff not involved in Fire Warden Duties are to comply with the directions of the Fire Wardens when evacuating the building to the Assembly Area (refer Evacuation Plan)
- Fire Wardens to check the Emergency Services have been called
- Fire Wardens to check all rooms accounting for all occupants at the time of the alarm (if Safe)
- Secure equipment and valuables (Only if Safe)
- When control is established AND IT IS SAFE, fight the fire using the appropriate fire extinguisher

**ALWAYS TAKE INSTRUCT ONS FROM THE ATTENDING EMERGENCY SERVICES PERSONNEL**

**DO NOT RE-ENTER THE BUILDING UNTIL IT IS DECLARED SAFE TO DO SO**

**To call Emergency Services - Dial '000' (triple zero)**

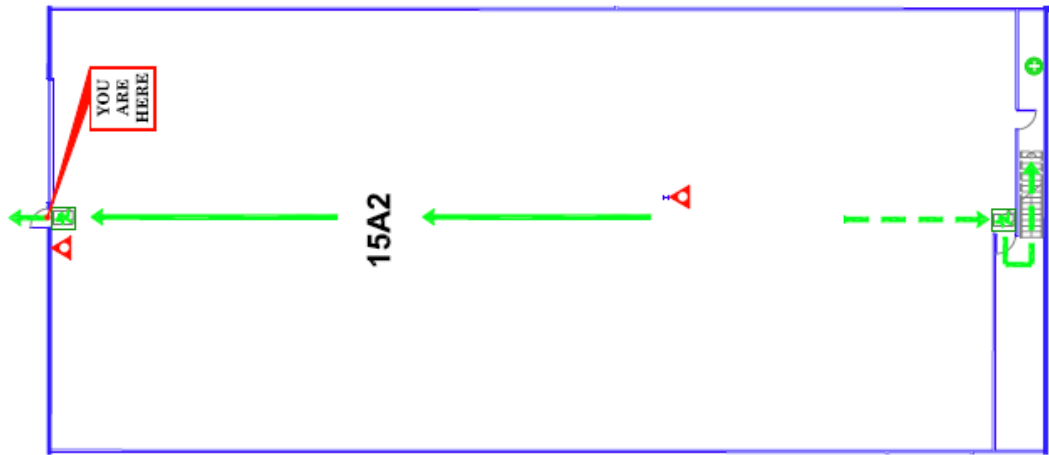


**FIRE EXTINGUISHER OPERATION**  
Stand well back from fire (two to four metres)  
Always face the fire with your back to a clear doorway  
**P**ull pin on the extinguisher  
**A**im directly at base of fire  
**S**queeze lever  
**S**wing, covering with a clear skin to skin motion  
Move slowly towards the fire (remain one pace away)

**DO NOT USE WATER ON OR NEAR ELECTRICAL EQUIPMENT**

**DIAL '000' TO CALL  
EMERGENCY SERVICES**

Mobility Impaired Persons should  
evacuate IMMEDIATELY on hearing a Fire  
Alarm notified by a non-impaired Person



**Fire Evacuation Diagrams continued**

# FIRE EVACUATION DIAGRAM

**Moorooka Industrial Village  
BUILDING C - SHED 15B  
25 Michlin Street  
Moorooka Qld 4105**

- LEGEND**
- FIRE EXTINGUISHER  
Dry Chemical Powder
  - EMERGENCY EXIT
  - EXIT PATH
  - FLAMMABLE LIQUID STORE (F)



**FIRE EXTINGUISHER OPERATION**  
Stand well back from the fire (two to four metres).  
Always face the fire with your back to a clear doorway.  
**P**ull pin on the extinguisher.  
**A**im directly at base of fire.  
**S**queeze lever.  
**S**wEEP, sweeping with a slow side to side motion.  
Move slowly towards the fire (retreat one pace away!).

DO NOT USE WATER ON NEAR ELECTRICAL EQUIPMENT

DIAL '000' TO CALL  
EMERGENCY SERVICES

Locally Impaired Persons should  
evacuate IMMEDIATELY on hearing a Fire  
Alarm signaled by a non-voice siren.

EMERGENCY ALARM PROCEDURES

Installed in the building is a Fire Sprinkler-System.  
There are No Automatic or Manual fire warning systems installed in this building.

**FIRE WARNING CAN ONLY BE ACHIEVED BY 'Verbal Expression'**

**ALL STAFF AND VISITORS SHOULD BE MADE AWARE OF THIS SITUATION**

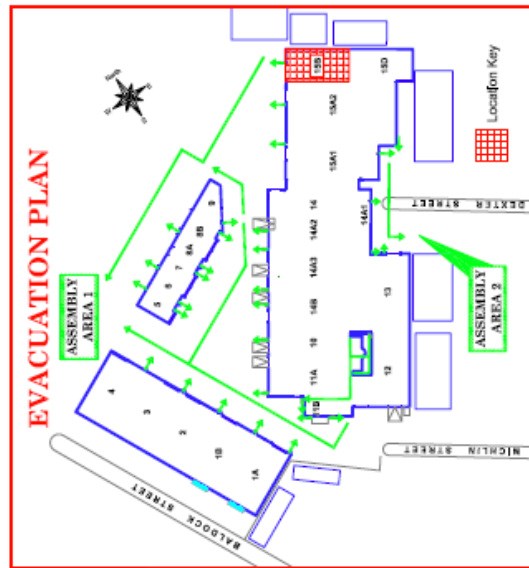
**WHEN A FIRE WARNING IS GIVEN YOU ARE REQUIRED TO PREPARE FOR AN EVACUATION**

- ⇒ All Visitors and Staff not involved in Fire Warden Duties are to comply with the direction of the Fire Wardens when evacuating the building to the Assembly Area (refer Evacuation Plan)
- ⇒ Fire Wardens to check the Emergency Services have been called
- ⇒ Fire Wardens to check all rooms accounting for all occupants at the time of the alarm (I Safe)
- ⇒ Secure equipment and valuables (Only if Safe)
- ⇒ When control is established AND IT IS SAFE, fight the fire using the appropriate fire extinguisher

**ALWAYS TAKE INSTRUCTIONS FROM THE ATTENDING EMERGENCY SERVICES PERSONNEL.**

**DO NOT RE-ENTER THE BUILDING UNTIL IT IS DECLARED SAFE TO DO SO**

To call Emergency Services - Dial '000' (triple zero)

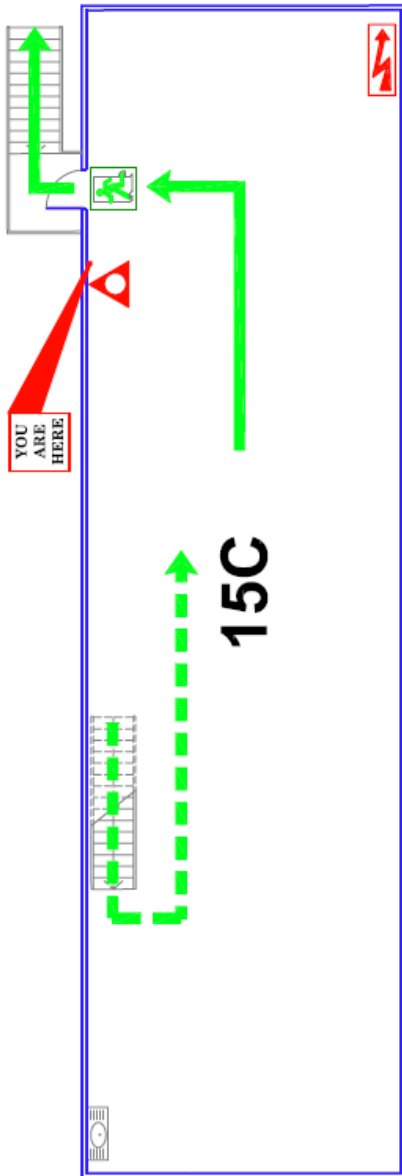


Valuation Date: March 2012

Fire Evacuation Diagrams continued

**FIRE  
EVACUATION  
DIAGRAM**

**Moorooka Industrial Village  
BUILDING C - SHED 15C  
24 Dexter Street  
Moorooka Qld 4105**



**FIRE EXTINGUISHER OPERATION!**  
Stand well back from the fire (two to four paces).  
Always face the fire with your back to a clear doorway.  
**P**ull pin on the extinguisher.  
**A**im directly at base of the fire.  
**S**queeze lever.  
**S**wing, operating with a side arm to the side of the fire.  
Move slowly towards the fire (stand one pace away).  
**DO NOT USE WATER ON OR NEAR ELECTRICAL EQUIPMENT**

**DIAL '000' TO CALL  
EMERGENCY SERVICES**

**MAIN: Unfit/Disabled Persons should  
evacuate IMMEDIATELY on hearing a Fire  
Alarm notified by a nominated Person**

- LEGEND**
- FIRE EXTINGUISHER  
Dry Chemical Powder
  - EMERGENCY EXIT
  - EXIT PATH
  - ALTERNATE EXIT PATH
  - ELECTRICAL SWITCHBOARD

**DeMartini Fletcher**  
Property Development & Investment



**EMERGENCY ALARM PROCEDURES**  
Installed in the building is a Fire Sprinkler System.  
**There are No Automatic or Manual fire warning systems installed in this building**

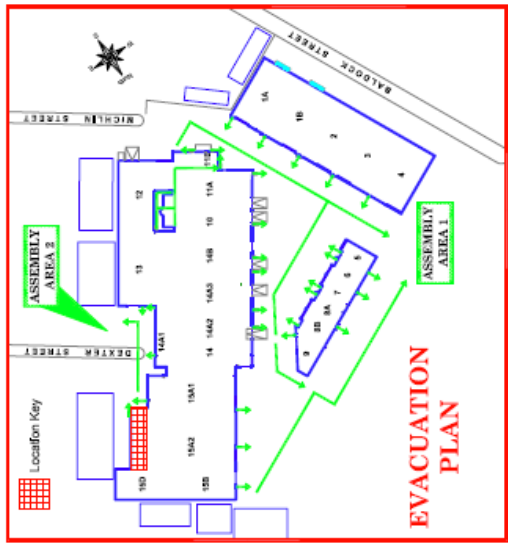
**Fire Warning can only be achieved by 'Verbal Expression'**  
ALL STAFF AND VISITORS SHOULD BE MADE AWARE OF THIS SITUATION

**WHEN A FIRE WARNING IS GIVEN YOU ARE REQUIRED TO PREPARE FOR AN EVACUATION**

- ☞ All Visitors and Staff not involved in Fire Warden Duties are to comply with the directions of the Fire Wardens when evacuating the building to the Assembly Area (refer Evacuation Plan)
- ☞ Fire Wardens to check the Emergency Services have been called
- ☞ Fire Wardens to check all rooms accounting for all occupants at the time of the alarm (If Safe)
- ☞ Secure equipment and materials (Only if Safe)
- ☞ When control is established AND IT IS SAFE, fight the fire using the appropriate fire extinguisher

**ALWAYS TAKE INSTRUCTIONS FROM THE ATTENDING EMERGENCY SERVICES PERSONNEL**  
**DO NOT RE-ENTER THE BUILDING UNTIL IT IS DECLARED SAFE TO DO SO**

**To call Emergency Services - Dial '000' (triple zero)**



**JAMES G. HANLEY & ASSOCIATES**  
PROPERTY CONSULTANTS  
100/101 DEXTER STREET MOOROOKA QLD 4105  
MOOROOKA INDUSTRIAL VILLAGE EVACUATION PLAN

Version Date: March 2012

**Fire Evacuation Diagrams continued**

# FIRE EVACUATION DIAGRAM

**Moorooka Industrial Village  
BUILDING C - SHED 15D  
24 Dexter Street  
Moorooka Qld 4105**



**FIRE EXTINGUISHER OPERATION**  
Stand back from the fire (at least 4m).  
Always face the fire with your back to a clear doorway.  
**P**ull the top handle.  
**A**im directly at base of the fire.  
**S**queeze the lever.  
**S**wing, operating with a slow die to the motion.  
Move slowly towards the fire (remain one pace away).  
**DO NOT USE WATER ON OR NEAR ELECTRICAL EQUIPMENT**

**DIAL '000' TO CALL  
EMERGENCY SERVICES**

Mobility Impaired Persons should  
evacuate IMMEDIATELY on hearing a Fire  
Alarm notified by a nominated Person

**EMERGENCY ALARM PROCEDURES**  
Installed in the building is a Fire Sprinkler System.  
There are No Automatic or Manual fire warning systems installed in this building

**FIRE WARNING CAN ONLY BE ACHIEVED BY 'Verbal Expression'**

ALL STAFF AND VISITORS SHOULD BE MADE AWARE OF THIS SITUATION

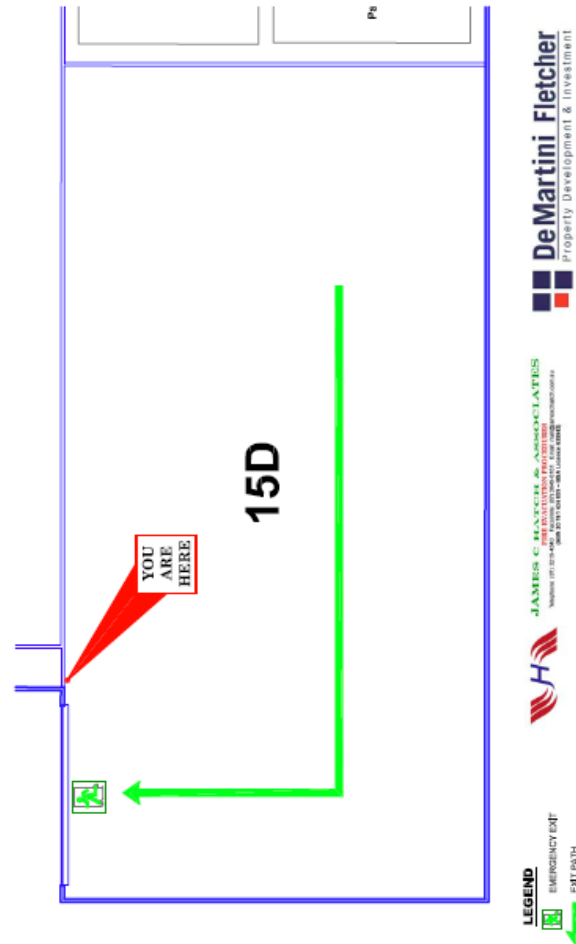
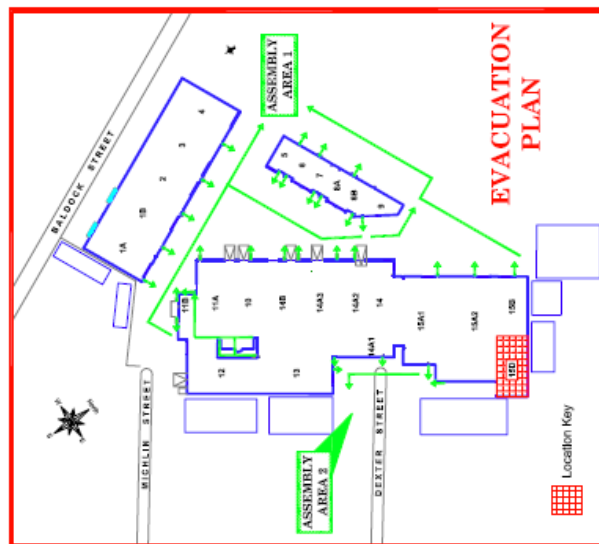
WHEN A FIRE WARNING IS GIVEN YOU ARE REQUIRED TO PREPARE FOR AN EVACUATION

- 1. All Visitors and Staff not involved in Fire Warden Duties are to comply with the directions of the Fire Wardens when evacuating the building to the Assembly Area (refer Evacuation Plan)
- 2. Fire Wardens to check the Emergency Services have been called
- 3. Fire Wardens to check all rooms accounting for all occupants at the time of the alarm (If Safe)
- 4. Secure equipment and valuables (Only if Safe)
- 5. When control is established AND IT IS SAFE, light the fire using the appropriate fire extinguisher

**ALWAYS TAKE INSTRUCTIONS FROM THE ATTENDING EMERGENCY SERVICES PERSONNEL**

**DO NOT RE-ENTER THE BUILDING UNTIL IT IS DECLARED SAFE TO DO SO**

**To call Emergency Services - Dial '000' (triple zero)**



**LEGEND**  
EMERGENCY EXIT  
EXIT PATH

**DM** DeMartini Fletcher  
Property Development & Investment

**JAMES C. MARTINI & ASSOCIATES**  
PROPERTY DEVELOPMENT EXPERTS  
1000 SOUTH BRISBANE QUAY, SUITE 1000, BRISBANE, QLD 4000  
Validation Date: March 2012

## Fire Evacuation Training Records

Attached

**Schedule 2 – Occupier’s statement<sup>1</sup>**

<b>Name of building and address:</b>	<b>Moorooka Industrial Village 25 Michlin Street Moorooka, Qld 4105</b>		
<b>Prescribed fire safety installation<sup>2</sup></b>	<b>Nominated Australian Standard or relevant maintenance requirements<sup>3</sup></b>	<b>Was a <i>critical defect notice</i><sup>4</sup> issued during the period covered by this statement (Yes/No)</b>	<b>Date of rectification of <i>critical defect</i><sup>4</sup></b>
Fire Sprinklers	AS 1851		
Fire Extinguishers	AS 1851		
Fire Hose Reels	AS 1851		
Fire Hydrants	AS 1851		
Emergency Lighting	AS 2293		
Exit Signs	AS 2293		

I .....as an authorised person on behalf of **Moorooka Industrial Village** declare the above listed *prescribed fire safety installations* have been *maintained* during the period covered by this statement in accordance with this code and as specified,

**Sign:** \_\_\_\_\_ **Date:** \_\_\_\_/\_\_\_\_/\_\_\_\_

1. This yearly statement must be kept with the building’s *maintenance records* in accordance with A2(c) and be produced on demand by local government officers and authorised officers of the Queensland Fire and Rescue Service.
2. Note: delete *prescribed fire safety installations* that are not installed in/for the building.
3. For example, in accordance with manufacturer’s instruction manual date day/month/year or in accordance with the building’s *certificate of classification*.
4. Copies of *critical defect notices* issued and proof of rectification within the period of this statement must be attached.
5. This is also known as sound systems and intercommunication systems for emergency purposes.
6. Includes additional *fire safety installations* or conditions that are *required* under the building’s *alternative solution* of the *Building Act 1975* or *BCA* clauses E1.10 and E2.3.
7. If the owner is signing or the *occupier* is not employed by a body corporate the ‘name of organisation’ section does not need to be completed.